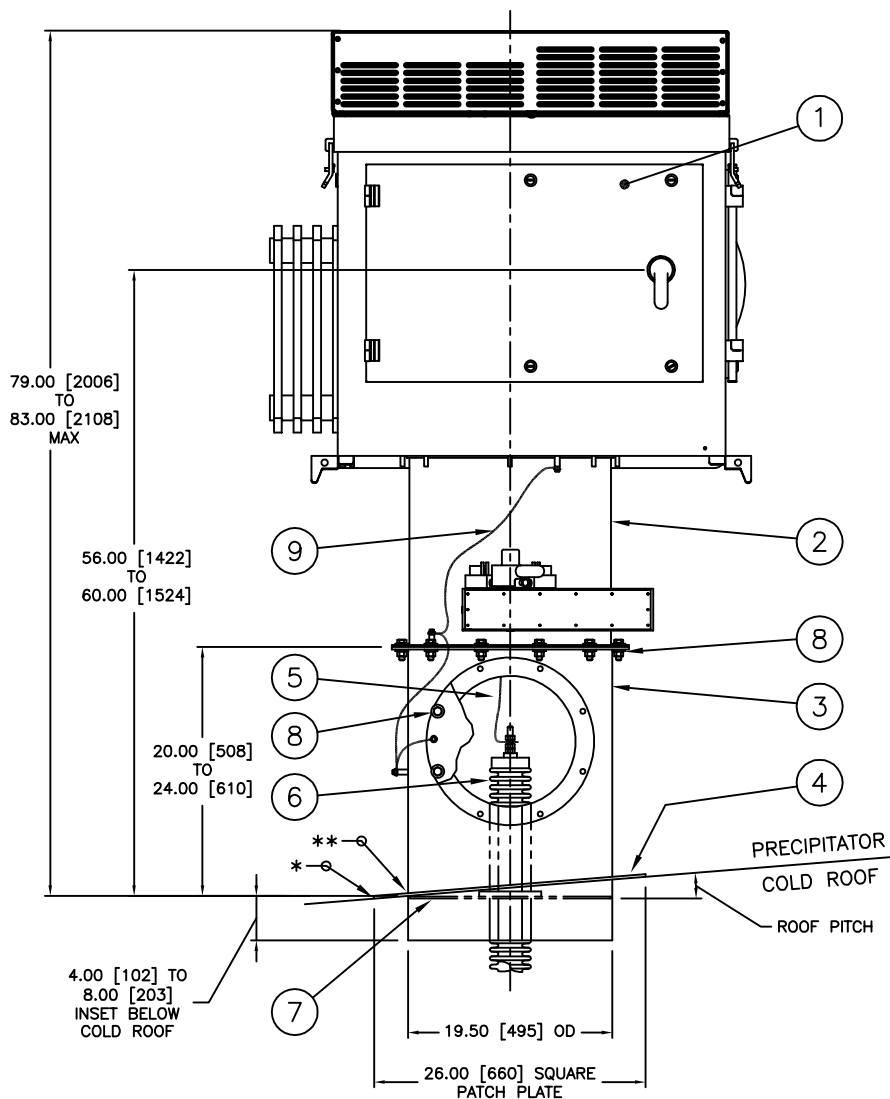




HF ESP, POWERPLUS SERIES ROOF ADAPTER ASSEMBLY

(FOR ROOF WITHOUT AN EXISTING FEEDTHRU BUSHING)



- ① POWERPLUS UNIT.
- ② HV DUCT AND BUSHING ENCLOSURE WITH GROUND SWITCH.
- ③ POWERPLUS ADAPTER SPOOL WITH 12.5" [318] ID ACCESS PORT FOR HV CONNECTION AND 1/2" [13] NPTF VENT FITTING.
- ④ COLD ROOF/SPOOL PATCH PLATE. FIELD WELD SEAMS* FOR WATER-TIGHT SEAL. PATCH PLATE IS DESIGNED TO ACCOMODATE PITCHED ROOFS, SEE NOTES FOR DETAILS.
- ⑤ H.V. CABLE CONNECTION, SUPPLIED BY END USER.
- ⑥ H.V. FEEDTHRU BUSHING, SUPPLIED BY END USER.
- ⑦ BUSHING PLATE INSIDE POWERPLUS ADAPTER SPOOL TO MOUNT H.V. FEEDTHRU BUSHING.
- ⑧ 3/8-16 SS HARDWARE AND GASKETS SUPPLIED BY NWL.
- ⑨ SS GROUND CABLE TO GROUND EACH SECTION, INCLUDING ACCESS COVERS.

NOTES:

1. ROOF PATCH PLATE ④ IS A 1/4" [6] THICK STEEL PLATE WITH A CLEARANCE HOLE FOR THE SPOOL ADAPTER ③. POSITION AND WELD* IN PLACE FIRST, THEN POSITION THE SPOOL ADAPTER SO THAT THE TOP FLANGE IS LEVEL AND WELD** IN PLACE.
2. EXISTING HIGH VOLTAGE DUCT, IF ANY MUST BE REMOVED ENTIRELY TO ACCOMMODATE THE NEW PATCH PLATE COLD ROOF/SPOOL ADAPTER.
3. POWERPLUS ADAPTER SPOOL ③ ACCESS PORT MUST BE POSITIONED TOWARD AN OPEN AREA 'BEFORE WELDING IN PLACE' TO FACILITATE SERVICING.
4. WARNING: POWER PLUS UNIT WITH DUCT WORK WEIGHS A MAXIMUM OF 1200 lbs. [544 KG] COLD ROOF MAY NEED TO BE REINFORCED TO ACCEPT THE WEIGHT OF THE POWER PLUS UNIT.
5. MAXIMUM ALLOWABLE DUCT INTERNAL TEMPERATURE: 122°F (50°C).
MAXIMUM ALLOWABLE DUCT INTERNAL PRESSURE: 1 PSI (2.04"Hg).

DATA SHEET: ESPASSY2-D
REVISION DATE: 06/05/09
APPROVED BY: HH