

# Oil Processing 100% Reactance AC Power Supplies 25-250 KVA

## Electrical Ratings

Input Voltages: (Terminals L1, L2)

- 400VAC @ 50Hz nominal (Designed for input line ranging from 380-420VAC +/-5% line swing, max input range 361-441)
- 460VAC @ 60Hz nominal (Designed for input line ranging from 440-480VAC +/-5% line swing, max input range 418-504)

Nominal Output Voltages: (Can be changed with a 5-position 'No-load' tap switch)

(Open circuit)	TAP 1	TAP 2	TAP 3	TAP 4	TAP 5
(AC)	12KV	16.5KV	20KV	23KV	25KV

### Tertiary Voltage:

100VAC nominal ±5%, 200VA, fused for 2A (Terminals Y1, Y2)  
 (Actual tertiary voltage and frequency depends on input voltage and frequency variation from nominal.)

## Certifications

UL (60079-0, 60079-6, 60079-7) per SGS #FF126-05-0101.  
 CSA (E79-0, E79-6, E79-7) per QPS #LR 1001-2  
 Ex (EN50014) Per Demko No. 02 Atex 130819x and 02 Atex 130820x

CT Feedback: 5AAC ±5% proportional to the primary current depending on the CT used. (Terminals C1, C2)

Unit Size	CT Ratio		Unit Size	CT Ratio	
	50Hz	60Hz		50Hz	60Hz
25KVA	100:5	100:5	100KVA	300:5	250:5
37.5KVA	100:5	100:5	150KVA	400:5	400:5
50KVA	150:5	150:5	200KVA	600:5	500:5
75KVA	200:5	200:5	250KVA	700:5	600:5

Thermal Sensor: Thermal switch potted in XD1 coil (T1, T2)  
 Normally closed contact set to open at 87°C

## Physical Ratings

### Insulating Oil:

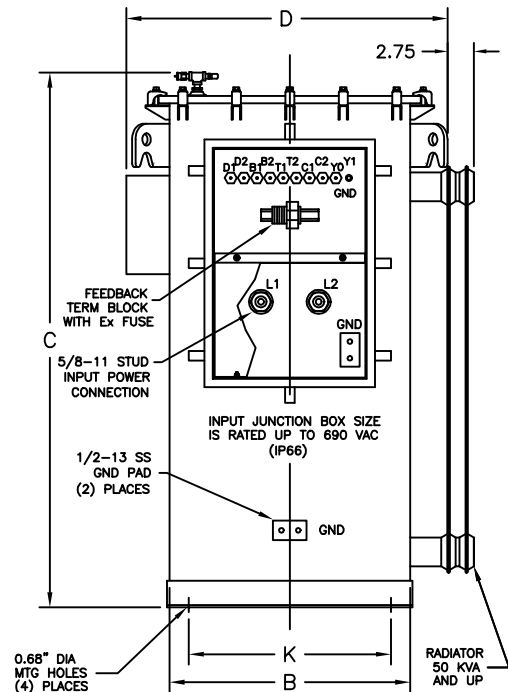
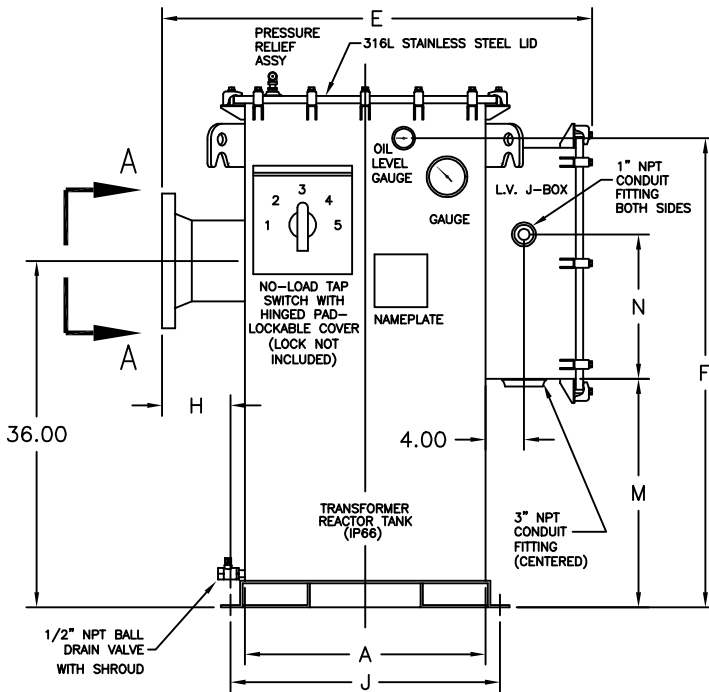
- Cross Grade 206 mineral oil (non PCB)
- Dow Corning 561 Silicone fluid (non PCB)

### Paint System:

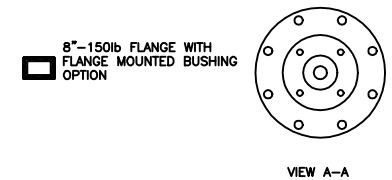
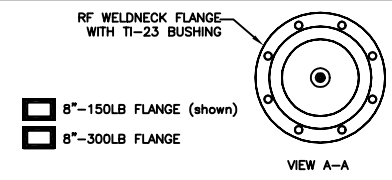
- Standard ASA 61 grey enamel. (Lid Unfinished)
- Megatran 50 premium paint system ASA 61 grey. (Lid Unfinished)
- None: All 316L stainless steel tank.

## Optional Features

- All Copper Windings: Transformer and reactor windings.
- Oil Heater: Optional 120V heater (B1, B2)
- Oil Level Switch: Switch contacts to indicate low level (D1, D2)
- Pressure Switch Lid mounted, SPDT switch contacts.
- Temperature Switch Lid mounted, SPDT switch contacts.



KVA	(DIMENSIONS IN INCHES)													OIL (GAL)	WGT (LBS)
	A	B	C	D	E	F	G	H	J	K	L	M	N		
<input type="checkbox"/> 25	25	25	56	33.50	43.75	48.75	-	6	28	21	-	23.75	15	100	2300
<input type="checkbox"/> 37.5	25	25	56	33.50	43.75	48.75	-	6	28	21	-	23.75	15	100	2500
<input type="checkbox"/> 50	30	30	56	38.50	48.75	48.75	-	6	33	26	-	23.75	15	150	3050
<input type="checkbox"/> 75	30	30	56	38.50	48.75	48.75	-	6	33	26	-	23.75	15	150	3300
<input type="checkbox"/> 100	35	35	57.50	43.50	53.75	50.75	-	6	38	31	-	23.75	15	260	4900
<input type="checkbox"/> 150	35	35	57.50	43.50	53.75	50.75	-	6	38	31	-	23.75	15	260	5000
<input type="checkbox"/> 200	40	40	59	48.50	63.75	51.75	-	6	43	36	-	15.75	23	350	5700
<input type="checkbox"/> 250	40	40	59	48.50	63.75	51.75	-	6	43	36	-	15.75	23	350	6000



DATE 11/29/01	DRAWING No.	REVISED 11/28/05
APPROVAL	REV	APPROVAL
<b>RJK</b>	<b>A113210</b>	<b>C RJK</b>

