

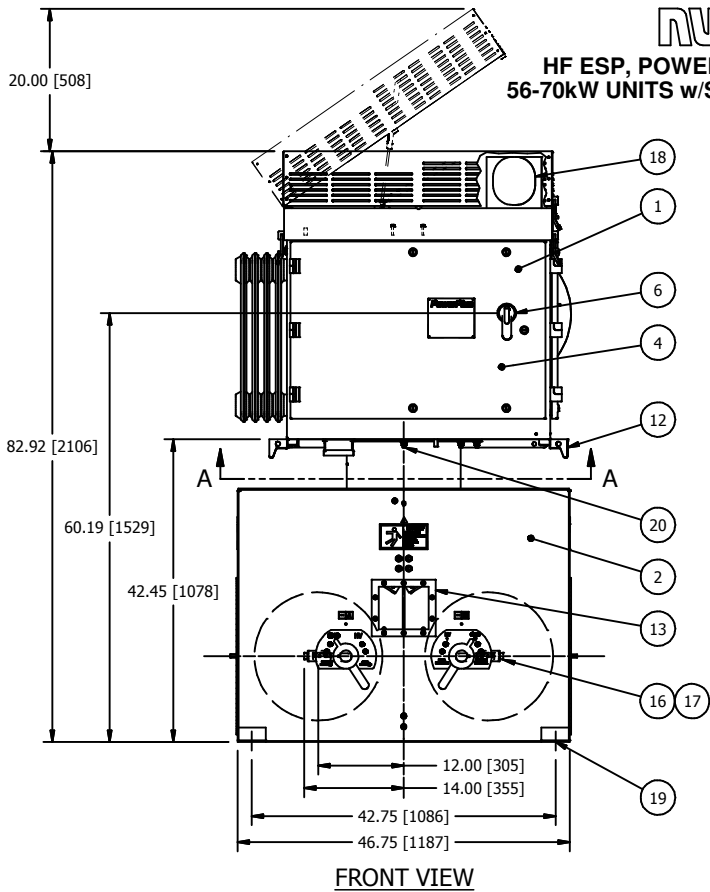
2

1

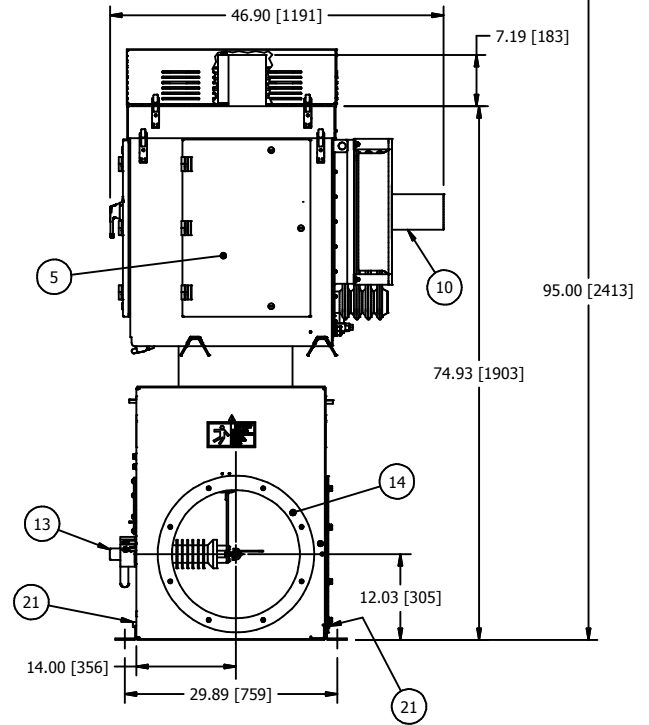
RWL

HF ESP, POWERPLUS SERIES 56-70kW UNITS w/SPLITTER SWITCH

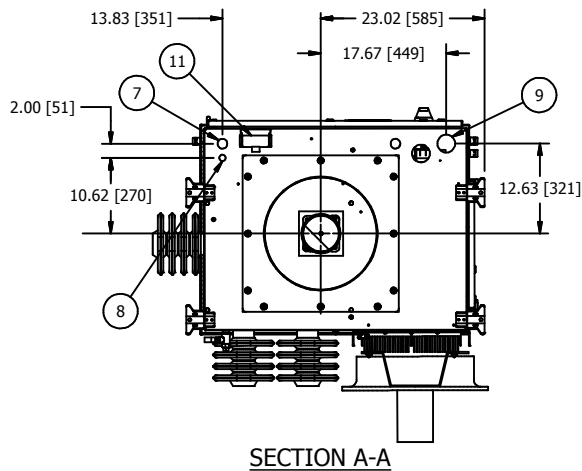
SEE NOTE 7



FRONT VIEW



SIDE VIEW



SECTION A-A

- 1 POWERPLUS UNIT
- 2 SPLITTER SWITCH (SHIPPED SEPARATELY).
- 3 RATINGS NAMEPLATE, ALUMINUM PHOTO ETCHED.
- 4 SWITCHGEAR AND CONTROL SECTION WITH HINGED DOOR. ALLOW 37" [940] OF CLEARANCE FROM THIS FACE FOR DOOR SWING.
- 5 POWER ELECTRONICS SECTION WITH HINGED DOOR. ALLOW 19" [483] OF CLEARANCE FROM THIS FACE FOR DOOR SWING.
- 6 INPUT CIRCUIT BREAKER SWITCH HANDLE WITH INTERLOCK PROVISION INSIDE. FOR ACCEPTABLE INTERLOCKS SEE DWG A105811.
- 7 1" [25.4] DIA. CONDUIT HOLE FOR 120V CONTROL WIRING.
- 8 1/2" [12.7] DIA. CONDUIT HOLE FOR LOW VOLTAGE COMMUNICATION AND OPTIONAL TRANSDUCER CONDUIT.
- 9 2" [51] DIA. CONDUIT HOLE FOR 3 PHASE POWER AND GROUND.
- 10 COOLING FAN FOR IGBT HEATSINK ASSEMBLY.
- 11 EZ SCOPE PORT WITH RJ45 SOCKET FOR KEYPAD DISPLAY CONNECTION AND BNC CONNECTORS FOR MAKING EXTERNAL kV AND mA MEASUREMENTS.
- 12 LIFTING HOOKS (4 PLACES).
- 13 H.V. SWITCH MECHANISM WITH VIEWING WINDOW AND INTERLOCK PROVISIONS. FOR INTERLOCK AND BOLT EXTENSION INFORMATION SEE DWG A105811.
- 14 SIDE EXIT 18" DUCT MOUNTING PROVISION. INCLUDES GASKETS AND 3/8-16 HARDWARE (8) PLACES ON A 20" [508] DIA. B.C. WITH 18" [457] DIA. DUCT OPENING.
- 15 SIDE EXIT 22" ACCESS COVER (NOT SHOWN). INCLUDES GASKETS AND 3/8-16 HARDWARE (8) PLACES ON A 20" [508] DIA. B.C. WITH 18" [457] DIA. DUCT OPENING.
- 16 1/2" NPT OUTPUT CONNECTION TAB. CONNECTIONS FACING SIDES ARE 14" [356] OFF CENTER. CONNECTIONS FACING BACK ARE ON CENTRE LINE OF DUCTS AT 12" [305].
- 17 OPTIONAL METRIC ADAPTER FOR H.V. BUSHING CONNECTION. CONVERTS 1/2" NPT TO M20-1.5. SEE DWG A117570.
- 18 HEAT EXCHANGER WITH PROTECTIVE HIGH HAT COVER. COVER IS HINGED TO ALLOW ACCESS TO CLEAN HEAT EXCHANGER, AND IS REQUIRED ON OUTDOOR UNITS (OPTION FOR INDOOR UNITS).
- 19 0.75" [19] HOLE BOLT PATTERN PROVIDED FOR SWITCH BOX MOUNTING. 42.75" [1086] X 29.88" [759] BOLT PATTERN.
- 20 S.S. GROUND CABLE TO GROUND EACH SECTION, INCLUDING ACCESS COVERS.
- 21 EQUIPMENT SAFETY GROUND TERMINATION, 3/8-16 GROUND BOSS.

NOTES:

1. SPLITTER SWITCH WILL BE SHIPPED SEPARATE FROM POWERPLUS UNIT AND MUST BE ASSEMBLED AT THE SITE.
2. POWERPLUS UNIT WILL BE SHIPPED MOUNTED TO A TEMPORARY SHIPPING SPOOL. REFER TO MANUAL FOR SWITCH MOUNTING INSTRUCTIONS.
3. POWERPLUS AND SWITCH MUST BE MOUNTED ON LEVEL SURFACE OR SHIMED TO WITHIN 1/8" [3.2] RISE PER 12" [305] RUN.
4. COLD ROOF MAY NEED TO BE REINFORCED TO ACCEPT THE WEIGHT OF THE POWER PLUS UNIT.
5. MAXIMUM ALLOWABLE DUCT INTERNAL TEMPERATURE: 122°F (50°C). MAXIMUM ALLOWABLE DUCT INTERNAL PRESSURE: 1 PSI (2.04" Hg). THE INSTALLER MUST USE AN ENTRANCE BUSHING IN ROOF TO MEET THESE SPECIFICATIONS.
6. SWITCHBOX MUST BE GROUNDED TO THE COLD ROOF BY THE END USER. REFER TO DWG B125481 FOR GROUNDING DETAILS.
7. MINIMUM CLEARANCE REQUIRED ABOVE FLOOR TO LIFT AND REMOVE THE T/R RIG. CLEARANCE DOES NOT INCLUDE RIGGING HEIGHT.

APPROX. WEIGHT WITH SPLITTER SWITCH: 1425bs (647kg).
 DIELECTRIC FLUID VOLUME: 29gal (110L).
 FINISH: ENAMEL, ASA 61, APPROX. RAL 7042.
 TANK AND CONTROL ENCLOSURE RATED NEMA 4/IP56.

DATA SHEET: ESP56-70SP-H

REVISION DATE: 01/17/11

APPROVED BY: HH

ALL DIMENSIONS IN INCHES [mm]