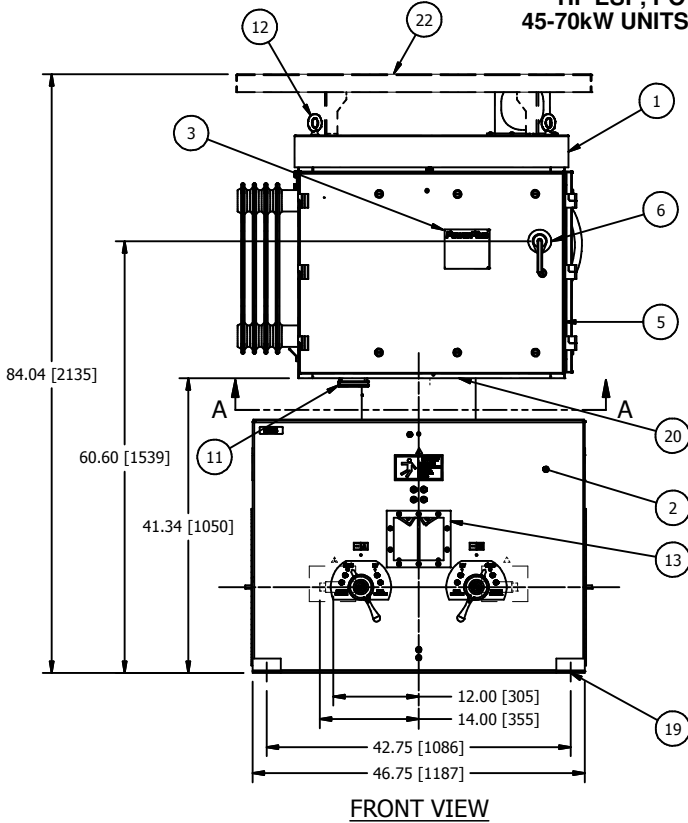
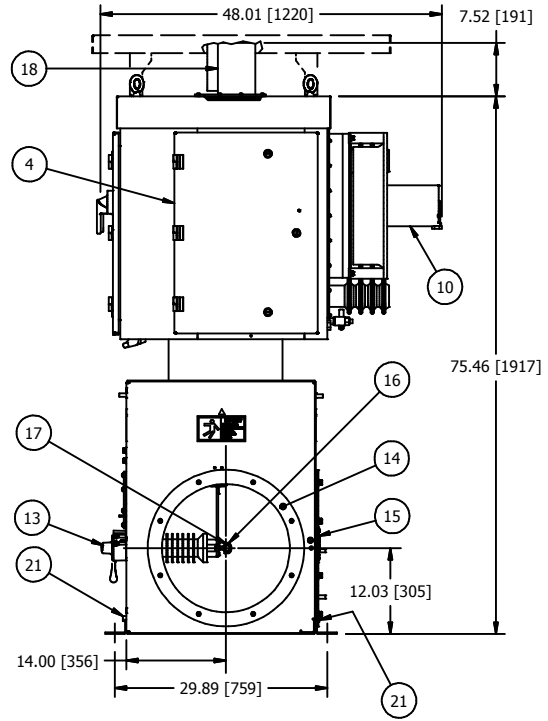




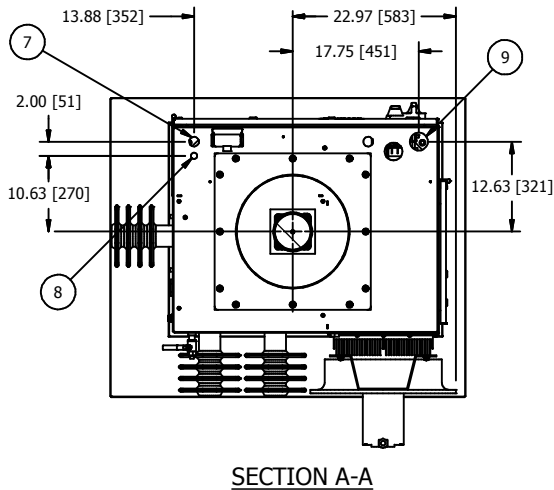
### HF ESP, POWERPLUS SERIES 45-70kW UNITS w/SPLITTER SWITCH



FRONT VIEW



SIDE VIEW



SECTION A-A

## NOTES:

1. SPLITTER SWITCH WILL BE SHIPPED SEPARATE FROM POWERPLUS UNIT AND MUST BE ASSEMBLED AT THE SITE.
2. POWERPLUS UNIT WILL BE SHIPPED MOUNTED TO A TEMPORARY SHIPPING SPOOL. REFER TO MANUAL FOR SWITCH MOUNTING INSTRUCTIONS.
3. POWERPLUS AND SWITCH MUST BE MOUNTED ON LEVEL SURFACE OR SHIMED TO WITHIN 1/8" [3.2] RISE PER 12" [305] RUN.
4. COLD ROOF MAY NEED TO BE REINFORCED TO ACCEPT THE WEIGHT OF THE POWER PLUS UNIT.
5. MAXIMUM ALLOWABLE DUCT INTERNAL TEMPERATURE: 122°F (50°C). MAXIMUM ALLOWABLE DUCT INTERNAL PRESSURE: 1 PSI (2.04" Hg). THE INSTALLER MUST USE AN ENTRANCE BUSHING IN ROOF TO MEET THESE SPECIFICATIONS.
6. SWITCHBOX MUST BE GROUNDED TO THE COLD ROOF BY THE END USER. REFER TO DWG B125481 FOR GROUNDING DETAILS.
7. MINIMUM CLEARANCE REQUIRED ABOVE FLOOR TO LIFT AND REMOVE THE T/R RIG IS 85". CLEARANCE DOES NOT INCLUDE RIGGING HEIGHT.

APPROX. WEIGHT WITH SPLITTER SWITCH: 1425bs (647kg).  
DIELECTRIC FLUID VOLUME: 29gal (110L).  
FINISH: ENAMEL, ASA 61, APPROX. RAL 7042.  
TANK AND CONTROL ENCLOSURE RATED NEMA 4/IP56.

- 1 POWERPLUS UNIT
- 2 SPLITTER SWITCH (SHIPPED SEPARATELY).
- 3 RATINGS NAMEPLATE, ALUMINUM PHOTO ETCHED.
- 4 POWER ELECTRONICS SECTION WITH HINGED DOOR. ALLOW 19" [483] OF CLEARANCE FROM THIS FACE FOR DOOR SWING.
- 5 SWITCHGEAR AND CONTROL SECTION WITH HINGED DOOR. ALLOW 37" [940] OF CLEARANCE FROM THIS FACE FOR DOOR SWING.
- 6 INPUT CIRCUIT BREAKER SWITCH HANDLE WITH INTERLOCK PROVISION INSIDE. FOR ACCEPTABLE INTERLOCKS SEE DWG C140616.
- 7 1" [25.4] DIA. CONDUIT HOLE FOR 120V CONTROL WIRING.
- 8 1/2" [12.7] DIA. CONDUIT HOLE FOR LOW VOLTAGE COMMUNICATION AND OPTIONAL TRANSDUCER CONDUIT.
- 9 2" [51] DIA. CONDUIT HOLE FOR 3 PHASE POWER AND GROUND.
- 10 COOLING FAN FOR IGBT HEATSINK ASSEMBLY.
- 11 EZ SCOPE PORT WITH RJ45 SOCKET FOR KEYPAD DISPLAY CONNECTION AND BNC CONNECTORS FOR MAKING EXTERNAL kV AND mA MEASUREMENTS.
- 12 LIFTING EYES (4 PLACES).
- 13 H.V. SWITCH MECHANISM WITH VIEWING WINDOW AND INTERLOCK PROVISIONS. FOR INTERLOCK AND BOLT EXTENSION INFORMATION SEE DWG B105881.
- 14 SIDE EXIT 18" DUCT MOUNTING PROVISION. INCLUDES GASKETS AND 3/8-16 HARDWARE (8) PLACES ON A 20" [508] DIA. B.C. WITH 18" [457] DIA. DUCT OPENING.
- 15 SIDE EXIT 22" ACCESS COVER (NOT SHOWN). INCLUDES GASKETS AND 3/8-16 HARDWARE (8) PLACES ON A 20" [508] DIA. B.C. WITH 18" [457] DIA. DUCT OPENING.
- 16 1/2" NPT OUTPUT CONNECTION TAB. CONNECTIONS FACING SIDES ARE 14" [356] OFF CENTER. CONNECTIONS FACING BACK ARE ON CENTRE LINE OF DUCTS AT 12" [305].
- 17 OPTIONAL METRIC ADAPTER FOR H.V. BUSHING CONNECTION. CONVERTS 1/2" NPT TO M20-1.5. SEE DWG A117570.
- 18 HEAT EXCHANGER UNIT WILL BE SHIPPED WITH A PROTECTIVE COVER OVER THE HEAT EXCHANGER. DISCARD PRIOR TO STARTUP.
- 19 0.75" [19] HOLE BOLT PATTERN PROVIDED FOR SWITCH BOX MOUNTING. 42.75" [1086] X 29.88" [759] BOLT PATTERN.
- 20 S.S. GROUND CABLE TO GROUND EACH SECTION, INCLUDING ACCESS COVERS.
- 21 EQUIPMENT SAFETY GROUND TERMINATION, 3/8-16 GROUND BOSS.
- 22 OPTIONAL SUN SHIELD MUST BE SHIPPED SEPARATELY AND INSTALLED IN THE FIELD.

ALL DIMENSIONS IN INCHES [mm]

DATA SHEET: ESP45-70SP  
REVISION DATE: 10/14/15  
APPROVED BY: HH