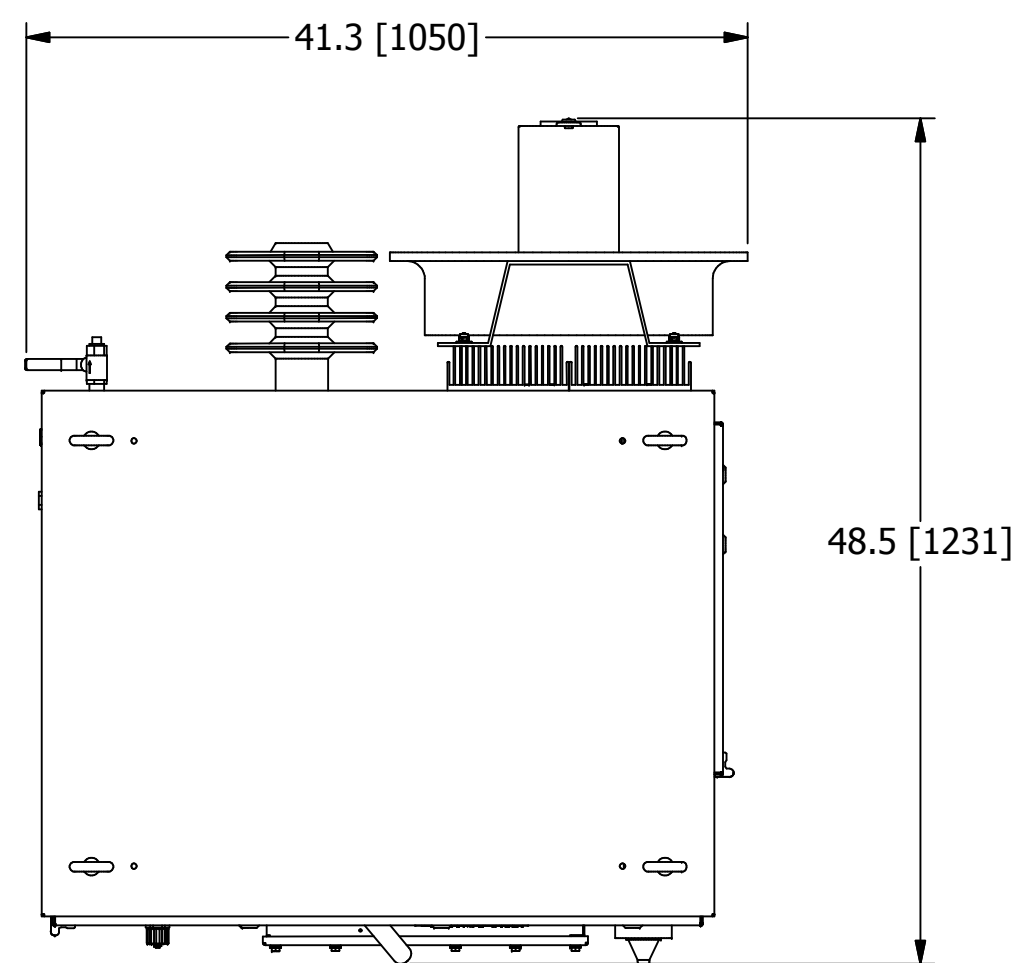
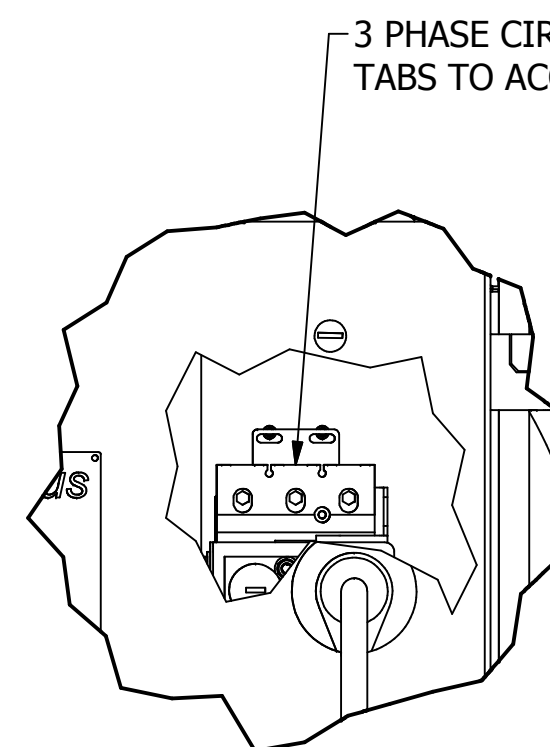


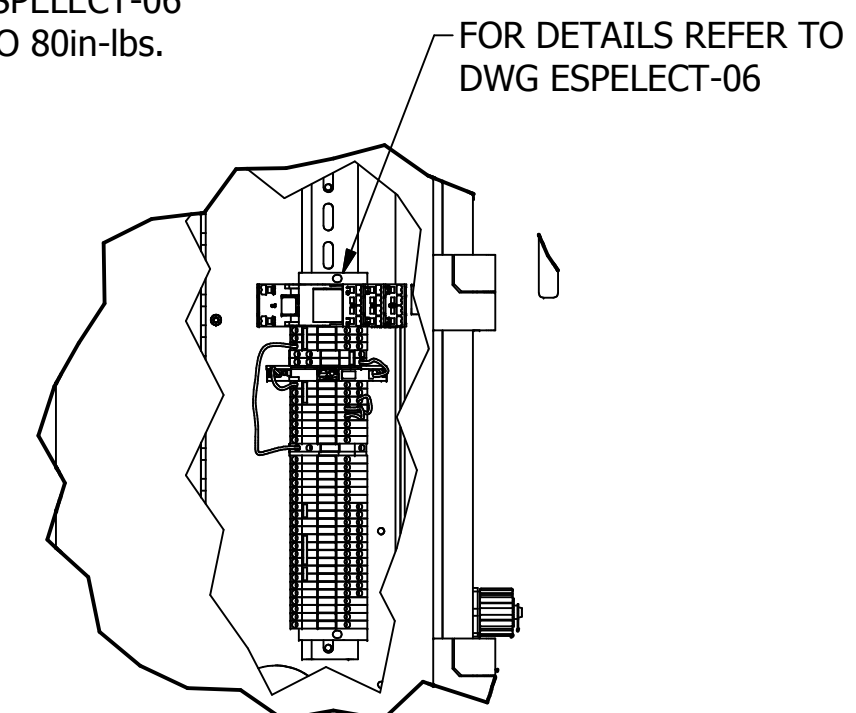
DETAIL A
SCALE 1 / 7



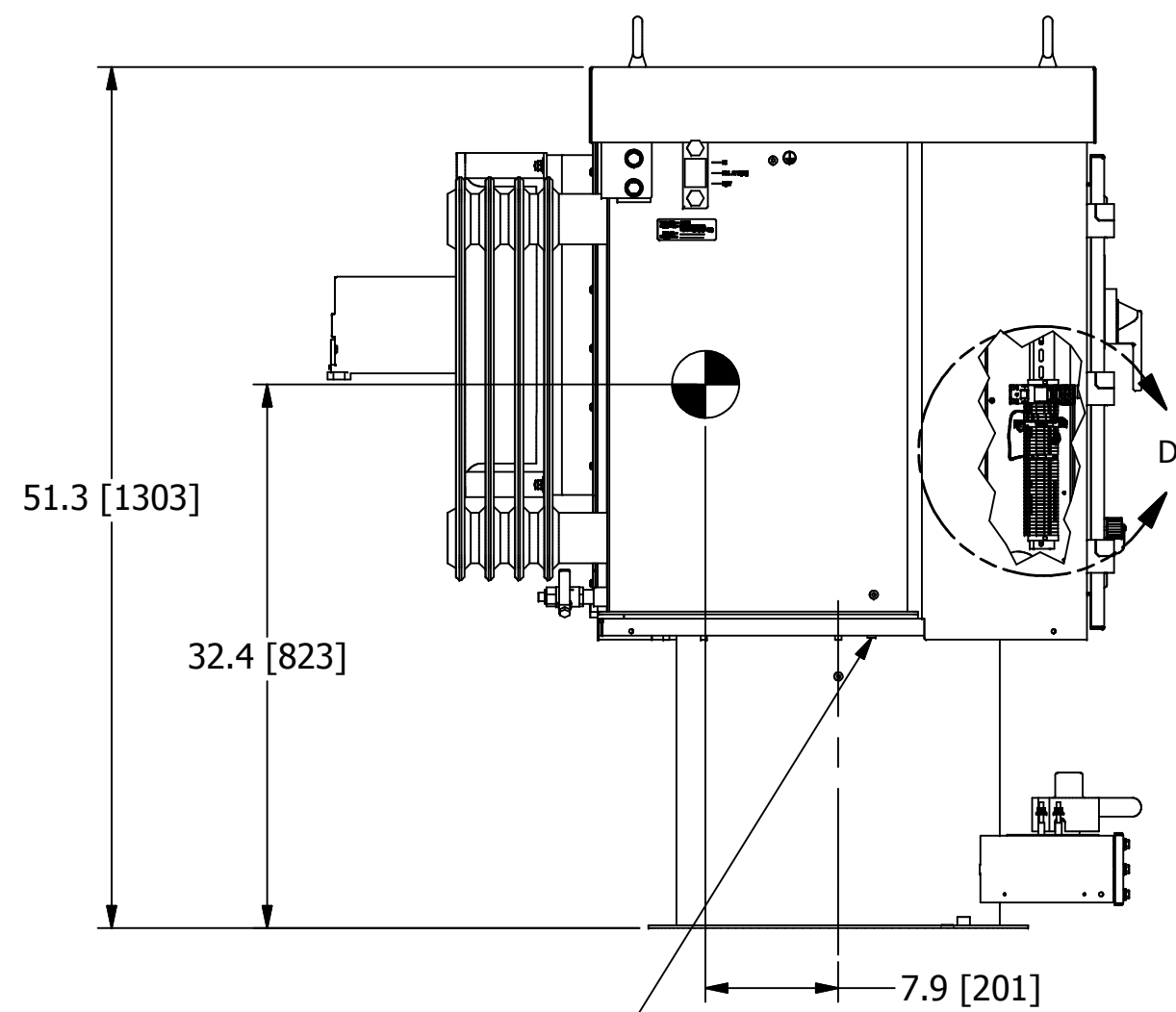
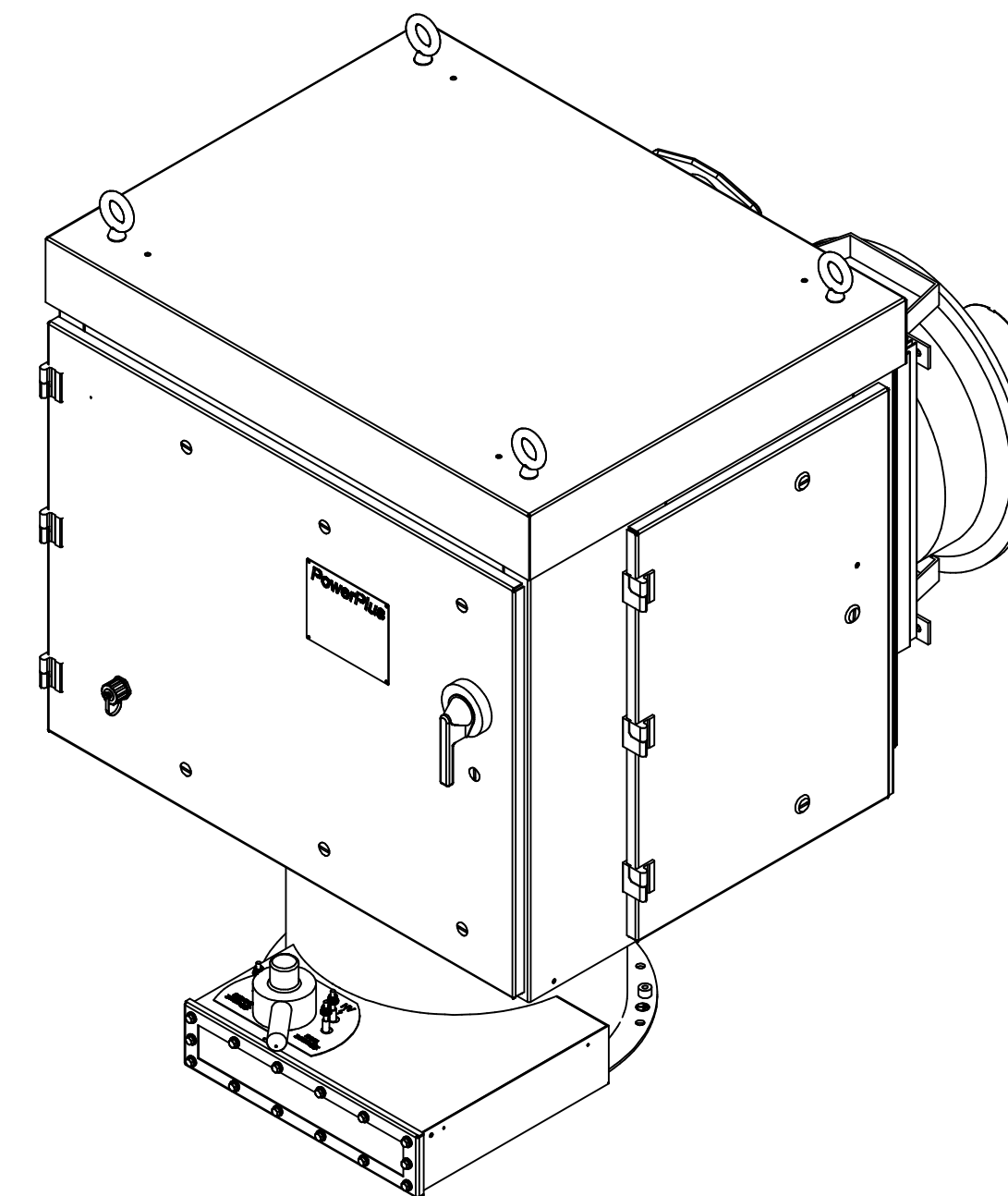
TOP VIEW



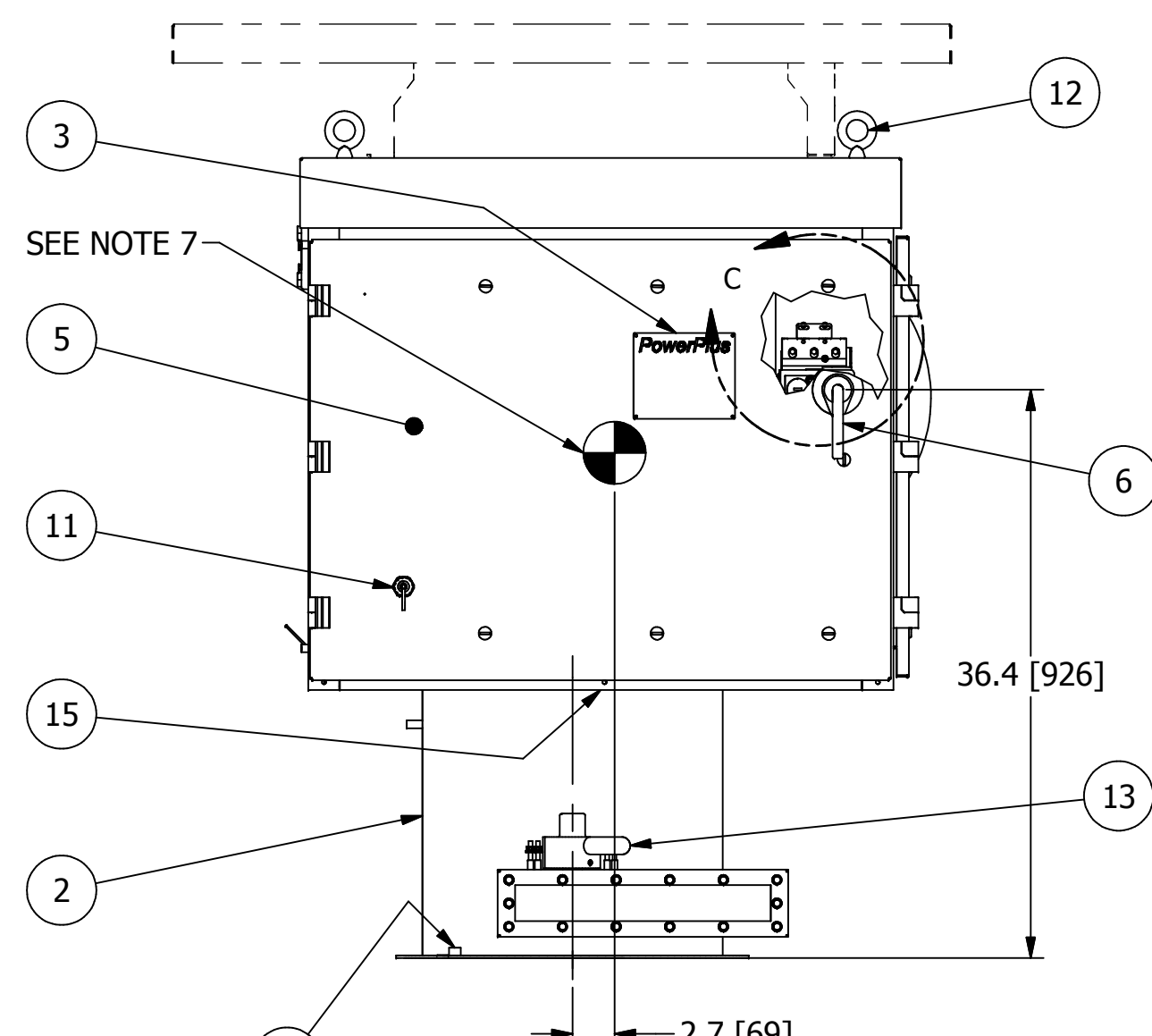
DETAIL C
CIRCUIT BREAKER DETAIL
SCALE 1 / 5



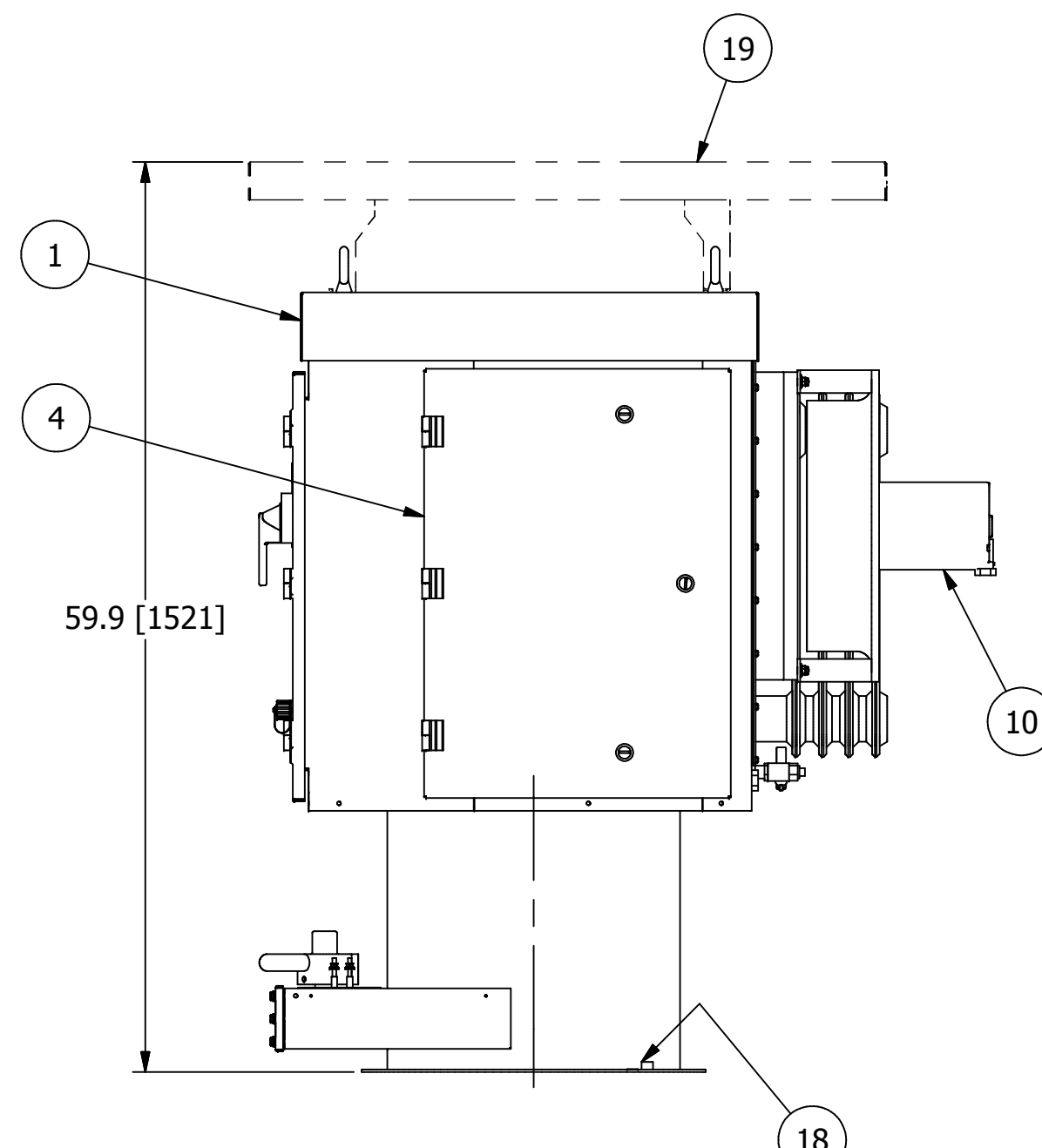
DETAIL D
'2TB' TERMINAL BLOCK RAIL ASSY
SCALE 1 / 5



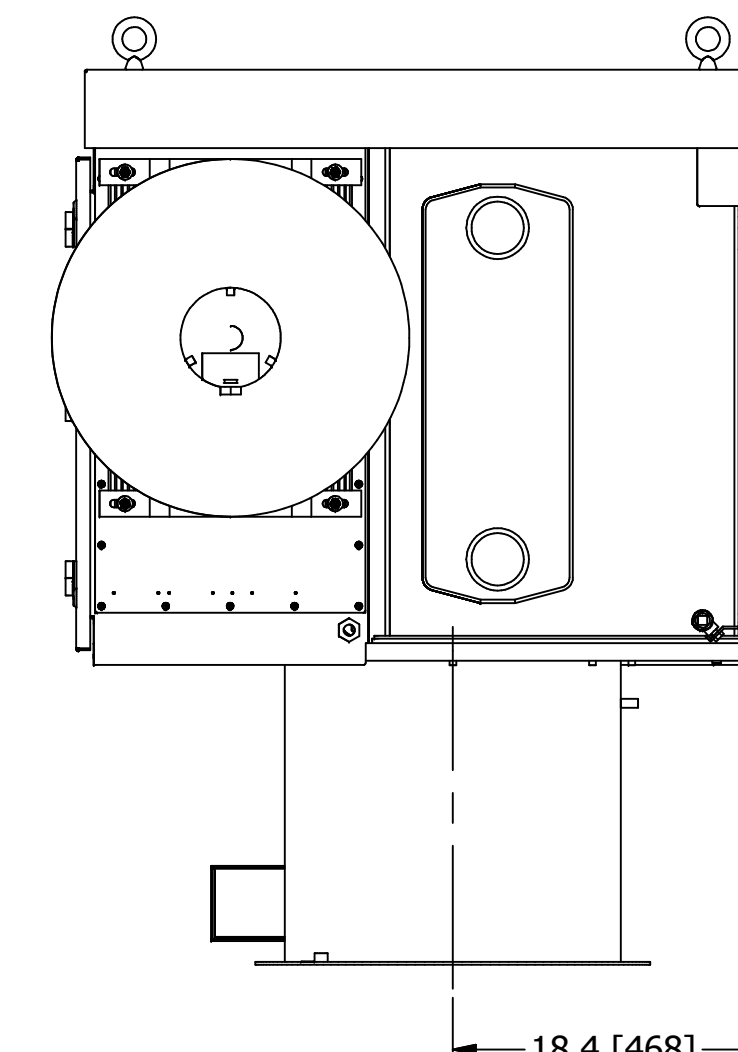
LEFT VIEW



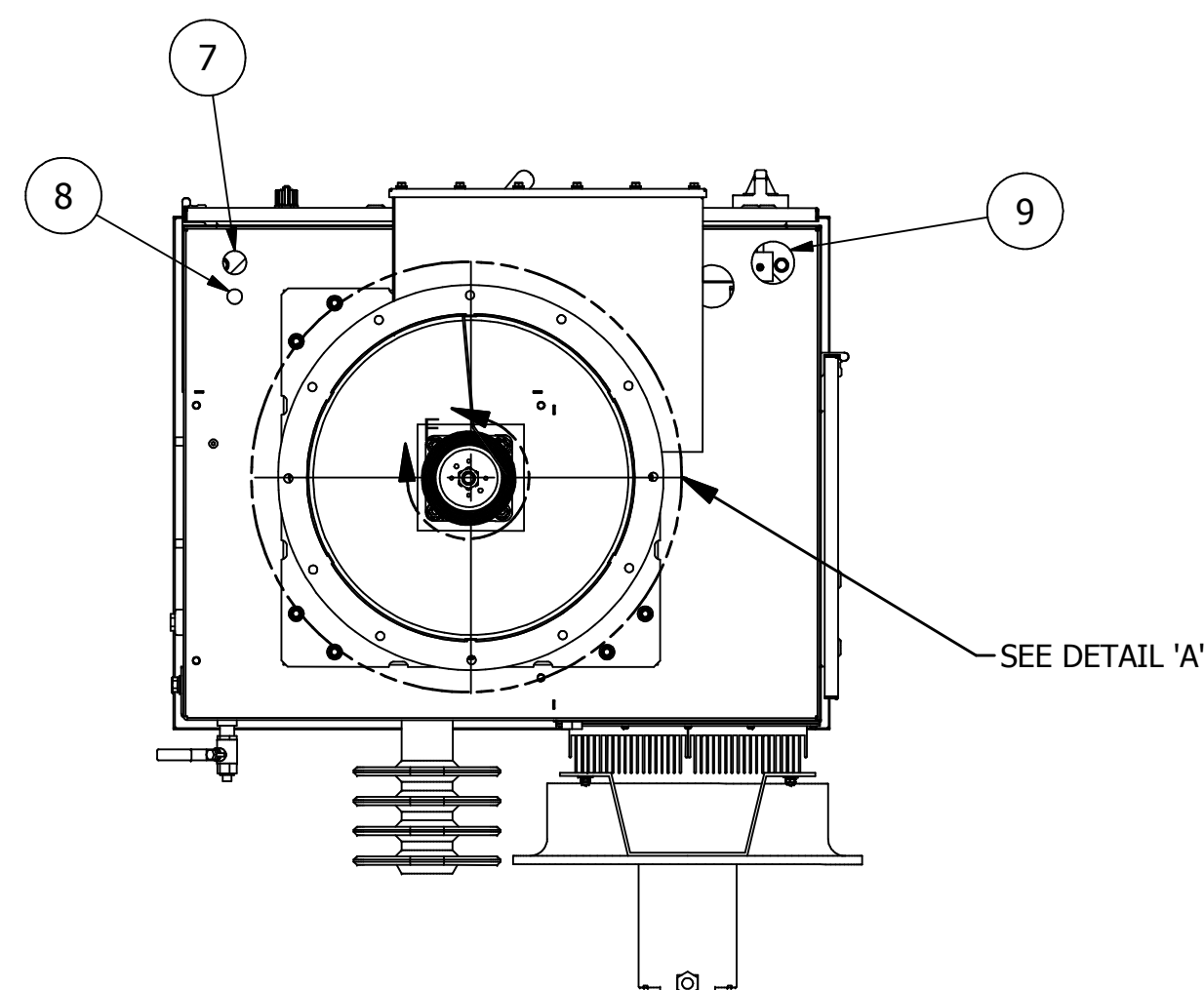
FRONT VIEW



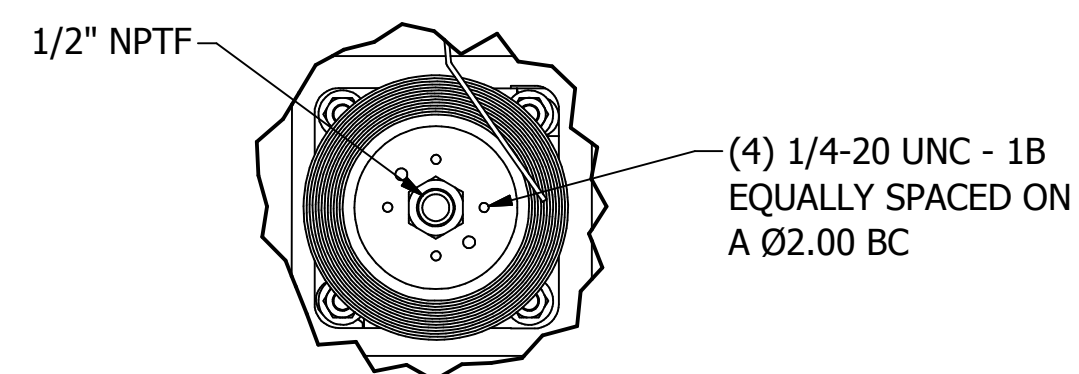
RIGHT VIEW



REAR VIEW



BOTTOM VIEW



DETAIL E
SCALE 1 / 4

BALLOONED NUMBERS:

- 1 POWERPLUS UNIT.
- 2 ROUND BOTTOM EXIT GROUND SWITCH.
- 3 RATINGS NAMEPLATE, ALUMINUM PHOTO ETCHED.
- 4 ACCESS DOOR TO POWER ELECTRONICS SECTION. ALLOW 19" [483] OF CLEARANCE FROM THIS FACE FOR DOOR SWING.
- 5 ACCESS DOOR TO SWITCHGEAR AND CONTROL SECTION. ALLOW 37" [940] OF CLEARANCE FROM THIS FACE FOR DOOR SWING.
- 6 INPUT CIRCUIT BREAKER SWITCH HANDLE W/ INTERLOCK PROVISION INSIDE. SEE DWG C140616.
- 7 1" [25.4] DIA. CONDUIT HOLE FOR 120V CONTROL WIRING.
- 8 1/2" [12.7] DIA. CONDUIT HOLE FOR LOW VOLTAGE TRANSDUCER AND COMMUNICATION LINK CONDUIT.
- 9 2" [51] DIA. CONDUIT HOLE FOR 3 PHASE POWER AND GROUND.
- 10 COOLING FAN FOR IGBT HEATSINK ASSEMBLY.
- 11 WEATHER TIGHT, RJ45 CONNECTOR FOR NWL HMI CONNECTION.
- 12 LIFTING HOOKS (4 PLACES).
- 13 H.V. SWITCH MECHANISM W/ VIEWING WINDOW AND INTERLOCK PROVISIONS. SEE DWG A105811.
- 14 BOTTOM EXIT DUCT FLANGE, 22.63" [575] O.D. X 19.00" [483] I.D. W/ (12) 0.50" [12.7] DIA. HOLES EQUALLY SPACED ON A 21.44" [545] DIA. BOLT CIRCLE (GASKET NOT INCLUDED).
- 15 S.S. GROUND CABLE TO GROUND EACH SECTION, INCLUDING ACCESS COVERS.
- 16 HIGH VOLTAGE SEMI-OUTDOOR BUSHING, SEE DETAIL 'A'.
- 17 OPTIONAL METRIC ADAPTER FOR H.V. BUSHING CONNECTION. CONVERTS 1/2" NPT TO M20-1.5. SEE DWG A117570.
- 18 EQUIPMENT SAFETY GROUND TERMINATION, 3/8-16 GROUND BOSS.
- 19 OPTIONAL SUN SHIELD MUST BE SHIPPED SEPARATELY AND INSTALLED IN THE FIELD.

SHIPPING NOTES:

- 1. POWERPLUS WILL BE SHIPPED WITH ROUND GROUND SWITCH.
- 2. POWERPLUS AND ROUND GROUND SWITCH COMBINED SHIPPING WEIGHT: 1000lbs [454kg]
- 3. DIELECTRIC FLUID VOLUME: 29gal [110L]
- 4. FINISH: ENAMEL, ASA 61, APPROX. RAL 7042.
- 5. INDICATES CENTER OF GRAVITY.

INSTALLATION NOTES:

- 1. POWERPLUS MUST BE MOUNTED ON LEVEL SURFACE OR SHIMMED TO WITHIN 1/8" [3.2] RISE PER 12" [305] RUN.
- 2. COLD ROOF MAY NEED TO BE REINFORCED TO ACCEPT THE WEIGHT OF THE POWERPLUS UNIT.
- 3. MAXIMUM ALLOWABLE DUCT INTERNAL TEMPERATURE: 122°F (50°C). MAXIMUM ALLOWABLE DUCT INTERNAL PRESSURE: 1 PSI (2.04" Hg). THE INSTALLER MUST USE AN ENTRANCE BUSHING IN ROOF TO MEET THESE SPECIFICATIONS.
- 4. POWERPLUS MUST BE GROUNDED TO THE COLD ROOF BY THE END USER. REFER TO DWG B126972 FOR GROUNDING DETAILS.
- 5. ALLOW 120" MINIMUM CLEARANCE ABOVE THE FLOOR TO LIFT AND REMOVE THE T/R RIG ASSEMBLY FROM THE OIL TANK. CLEARANCE DOES NOT INCLUDE RIGGING HEIGHT.
- 6. POWERPLUS AND SWITCH ARE SEALED, RATED NEMA 4/IP56.

ALL DIMENSIONS IN INCHES [mm]

NWL 312 RISING SUN RD BORDENTOWN, NJ 08505 TEL. (609) 298-7300 FAX. (609) 298-1982		
TITLE: HF ESP, POWERPLUS SERIES 7, 28-35kW UNITS, w/ GROUND SWITCH		
SCALE: N/A	APP'D BY: RJK	REVISION DATE: 01/29/18
DWG BY: KAF	D.E.: RJK	DWG: 28-35RD_S7
TOLERANCES: (UNLESS OTHERWISE SPECIFIED) ANGLES +/- 5 DEG FRACTIONS +/- 3/16		DECIMALS: XX +/- 0.1 DECIMALS: XXX +/- 0.015 NWL PROPRIETARY INFORMATION, NOT TO BE REPRODUCED WITHOUT WRITTEN CONSENT