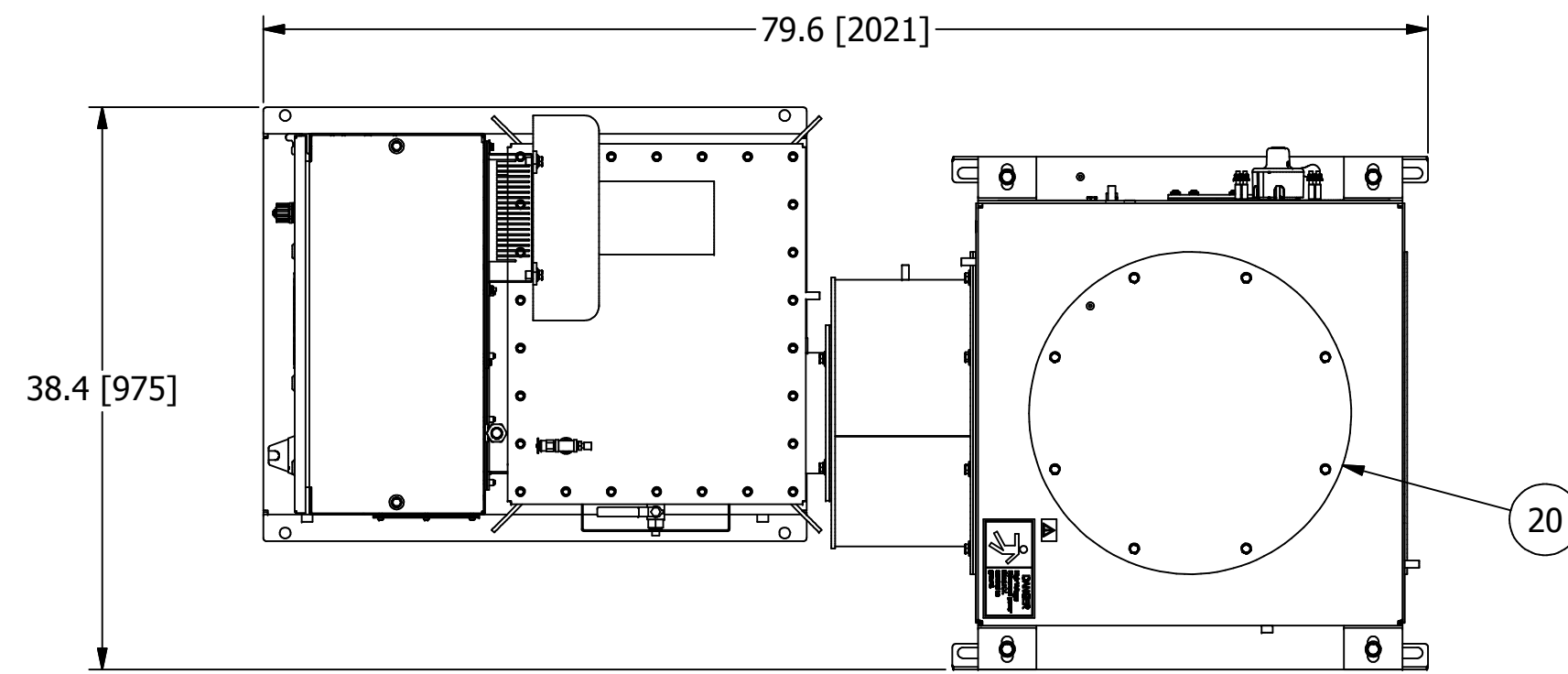
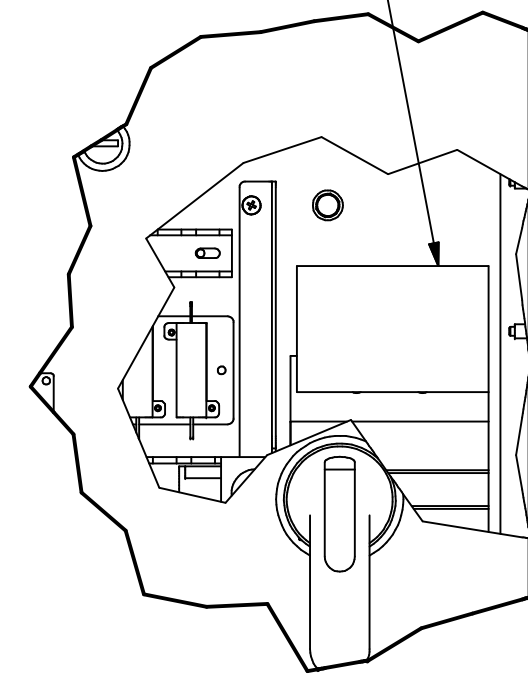


DETAIL A  
SCALE 1 / 7

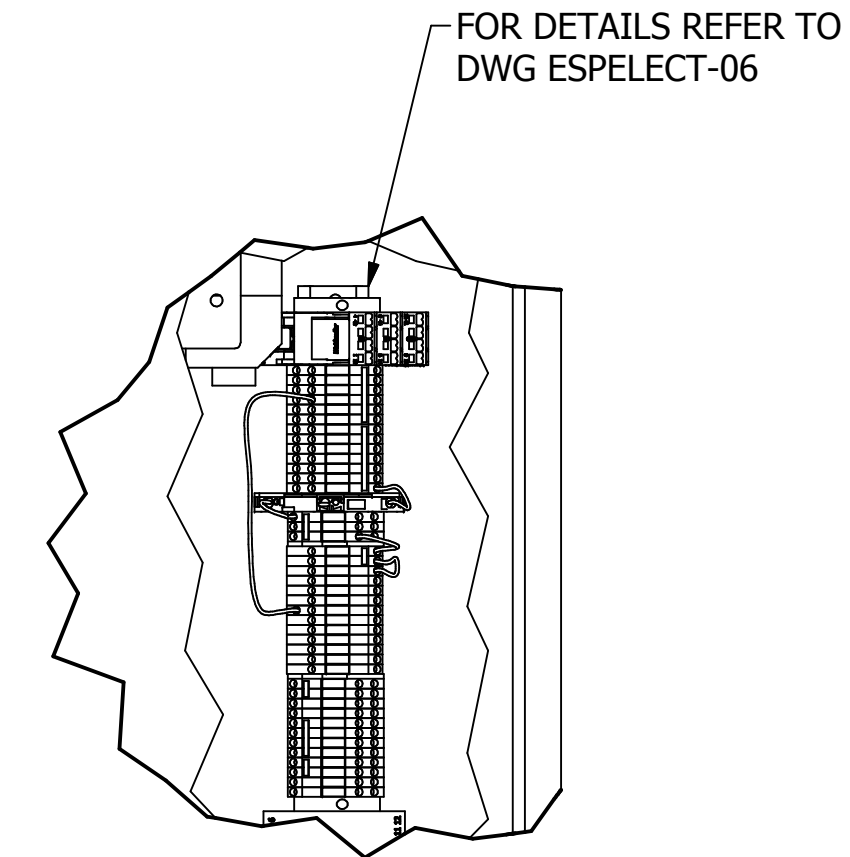


TOP VIEW

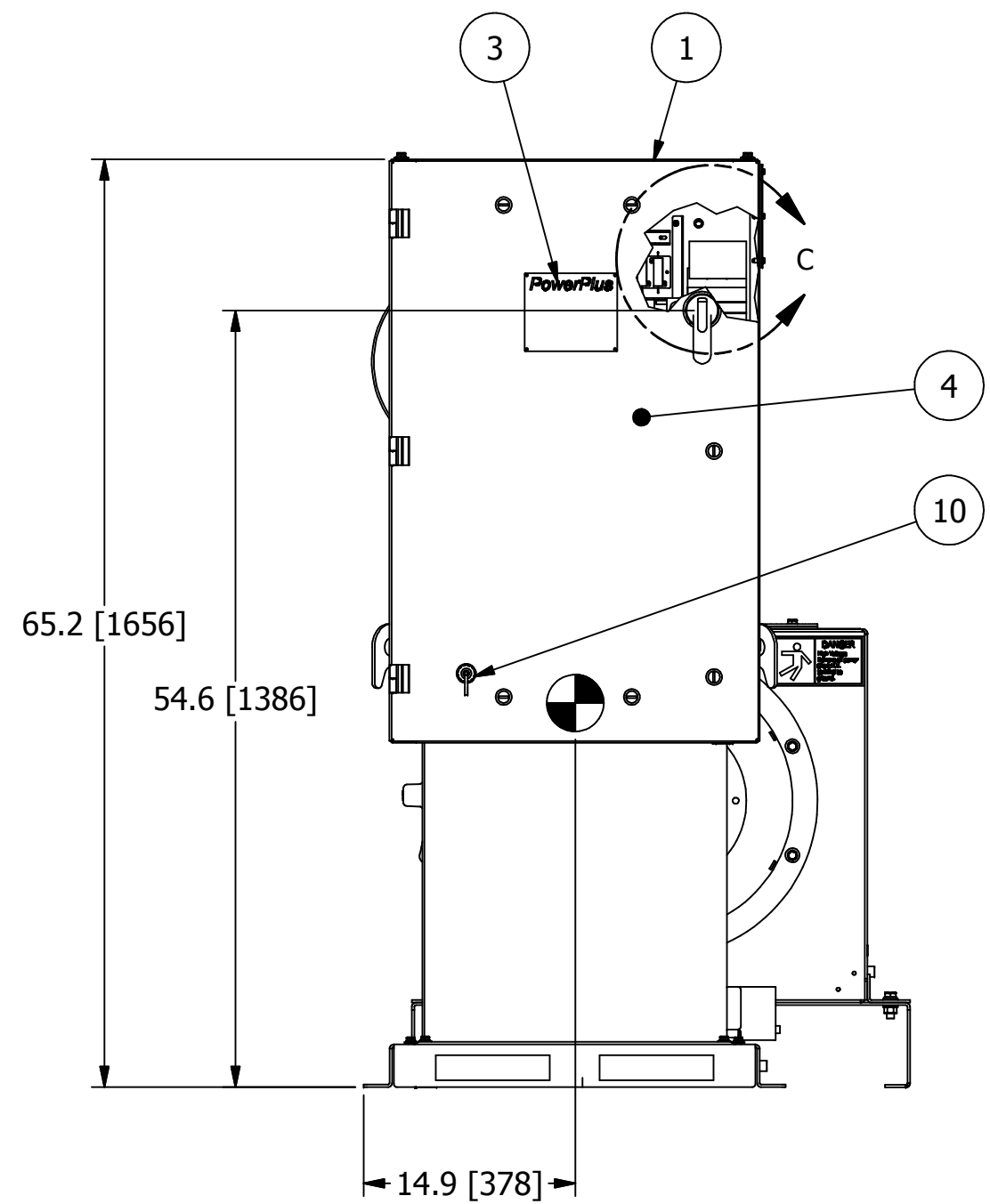
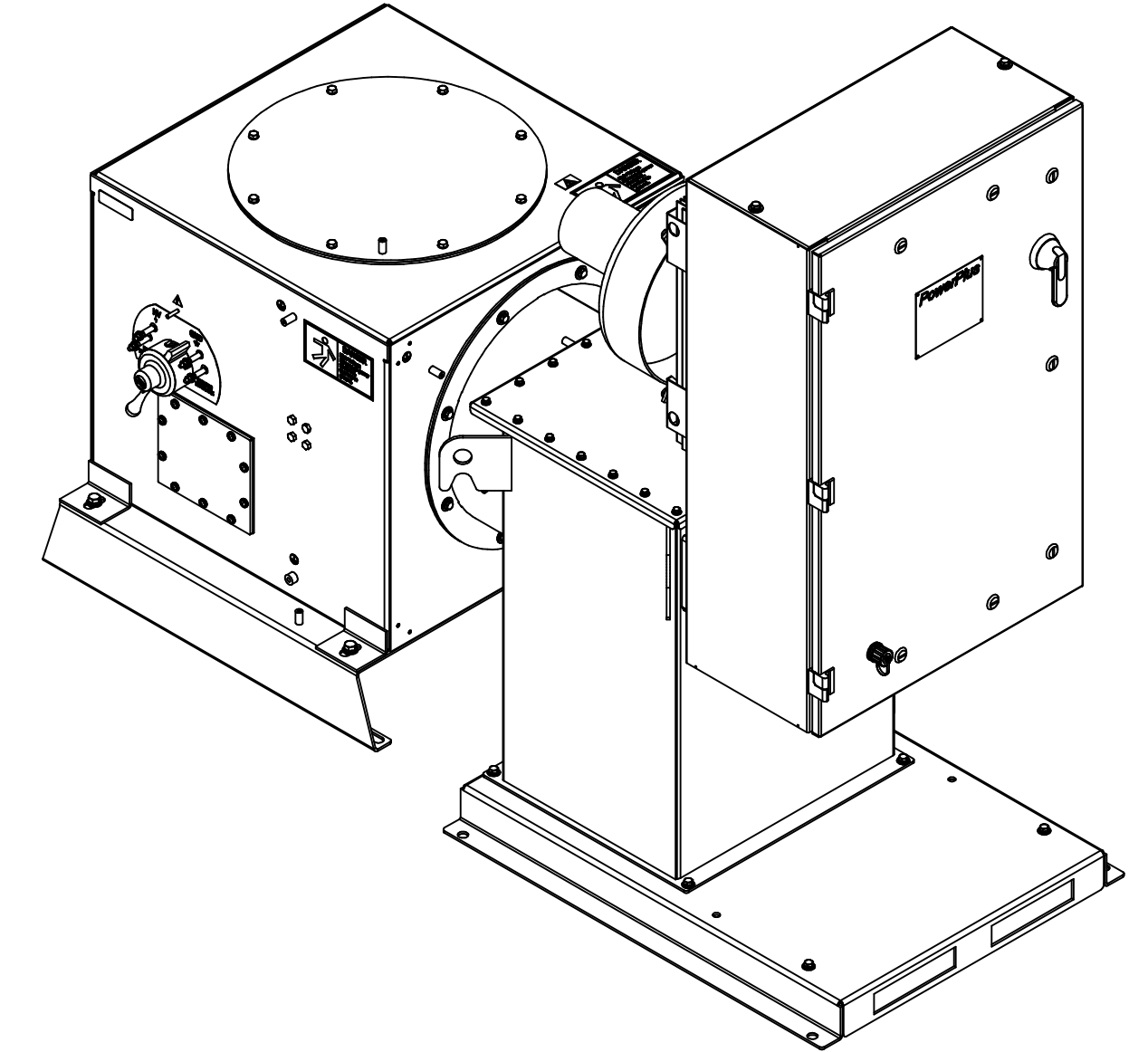
3 PHASE CIRCUIT BREAKER PER DWG ESPECT-06  
TABS TO ACCEPT 3/8" LUGS, TORQUE TO 80in-lbs.



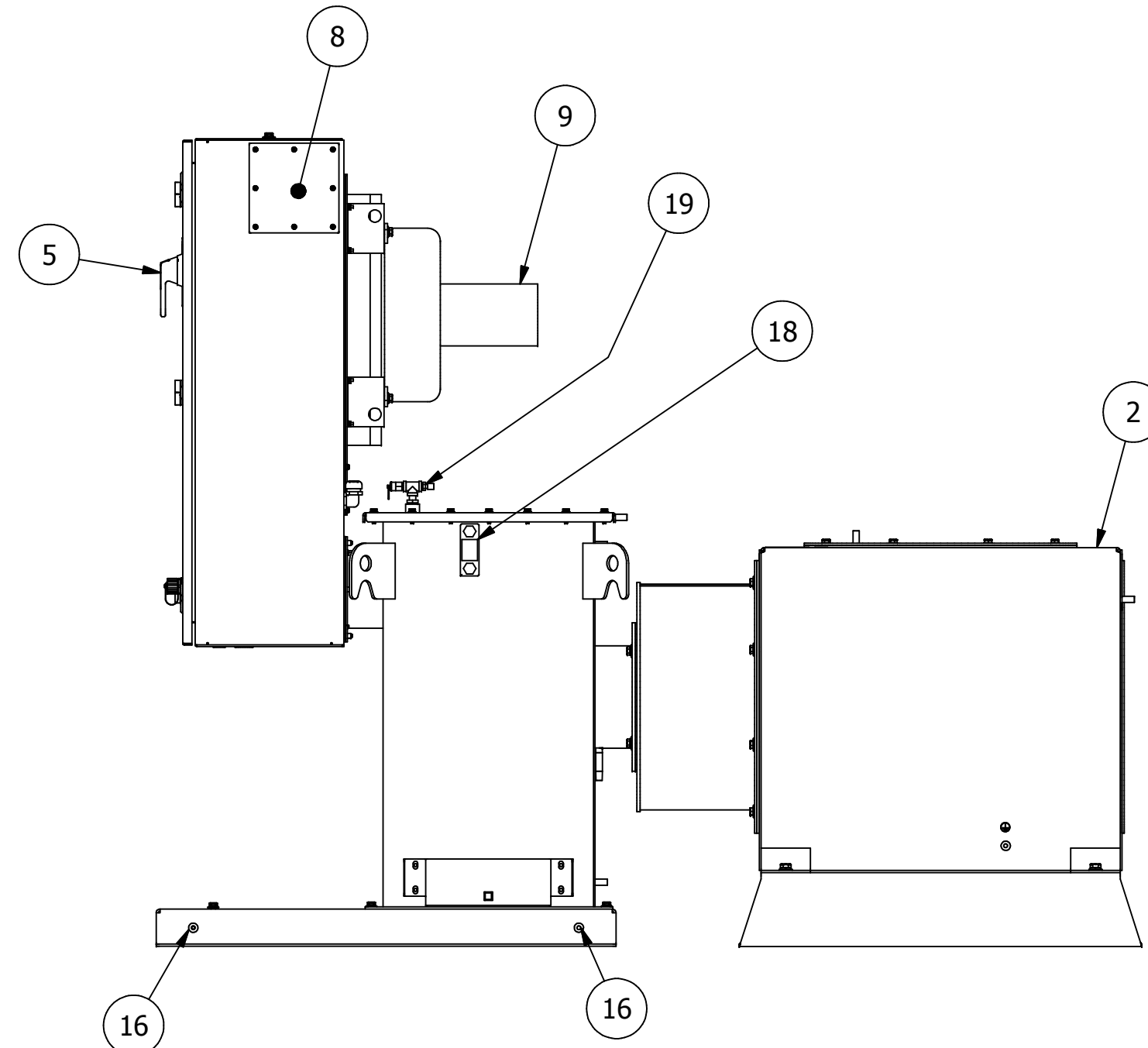
DETAIL C  
CIRCUIT BREAKER DETAIL  
SCALE 1 / 4



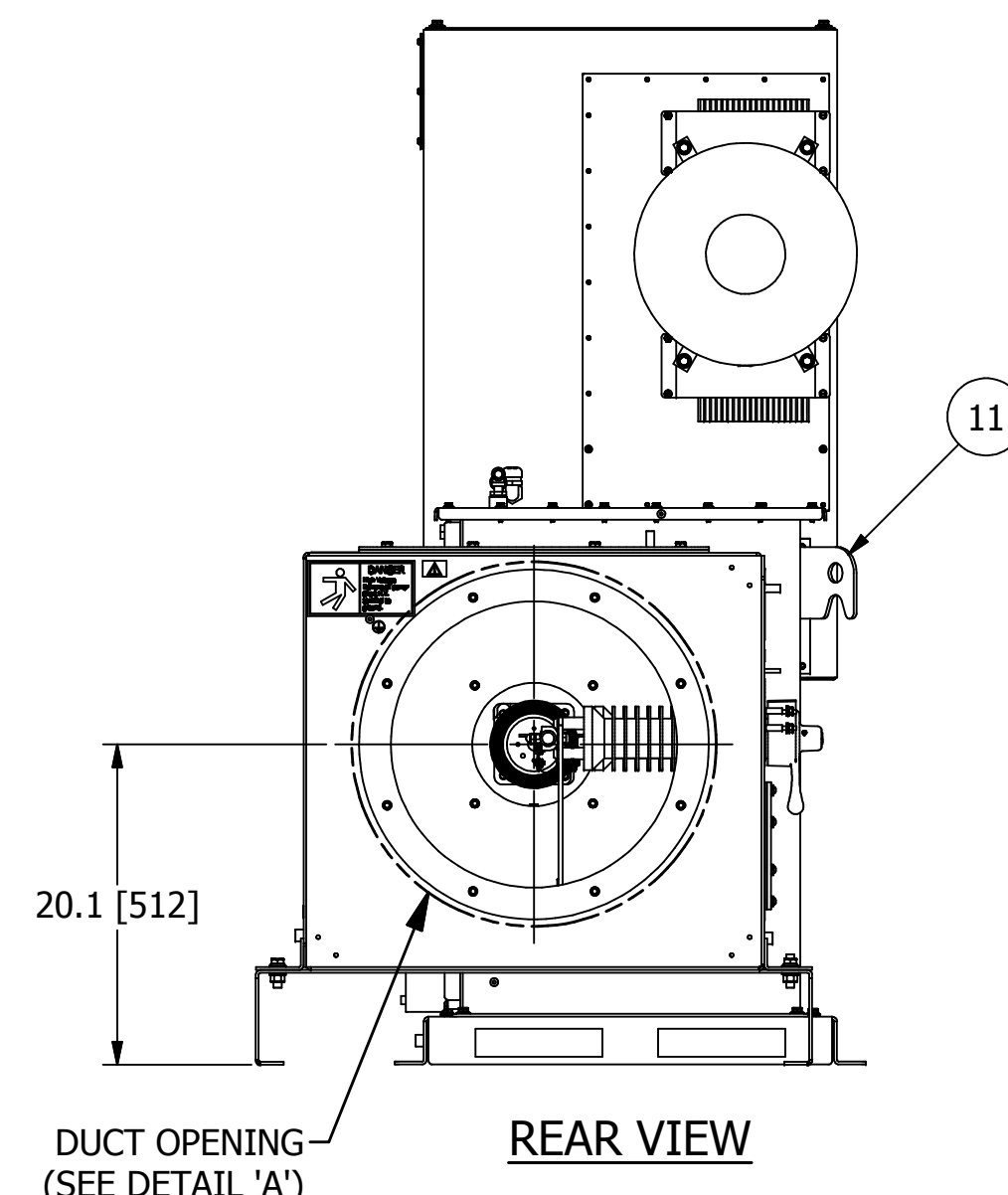
DETAIL D  
'2TB' TERMINAL BLOCK RAIL ASSY  
SCALE 1 / 4



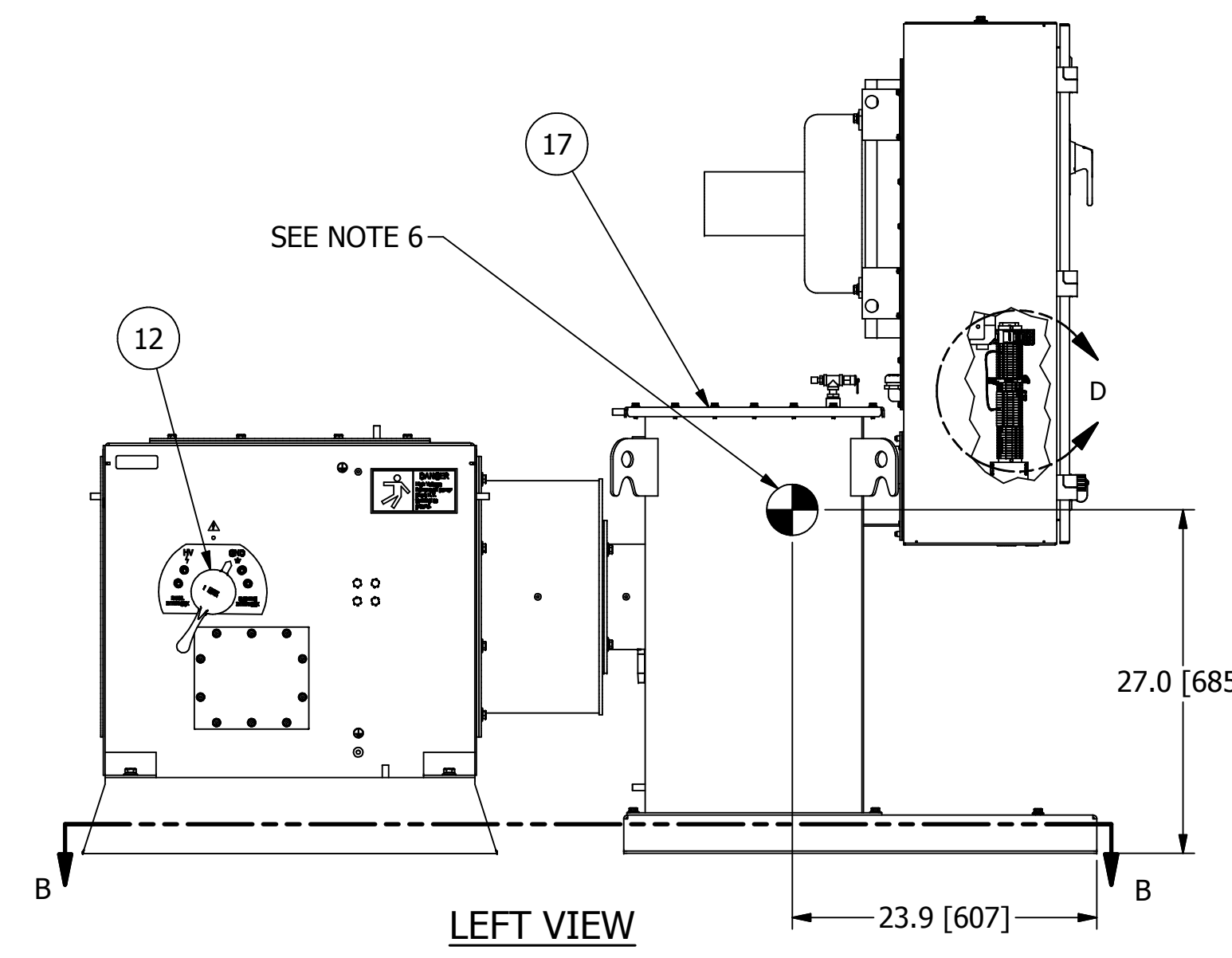
FRONT VIEW



RIGHT VIEW



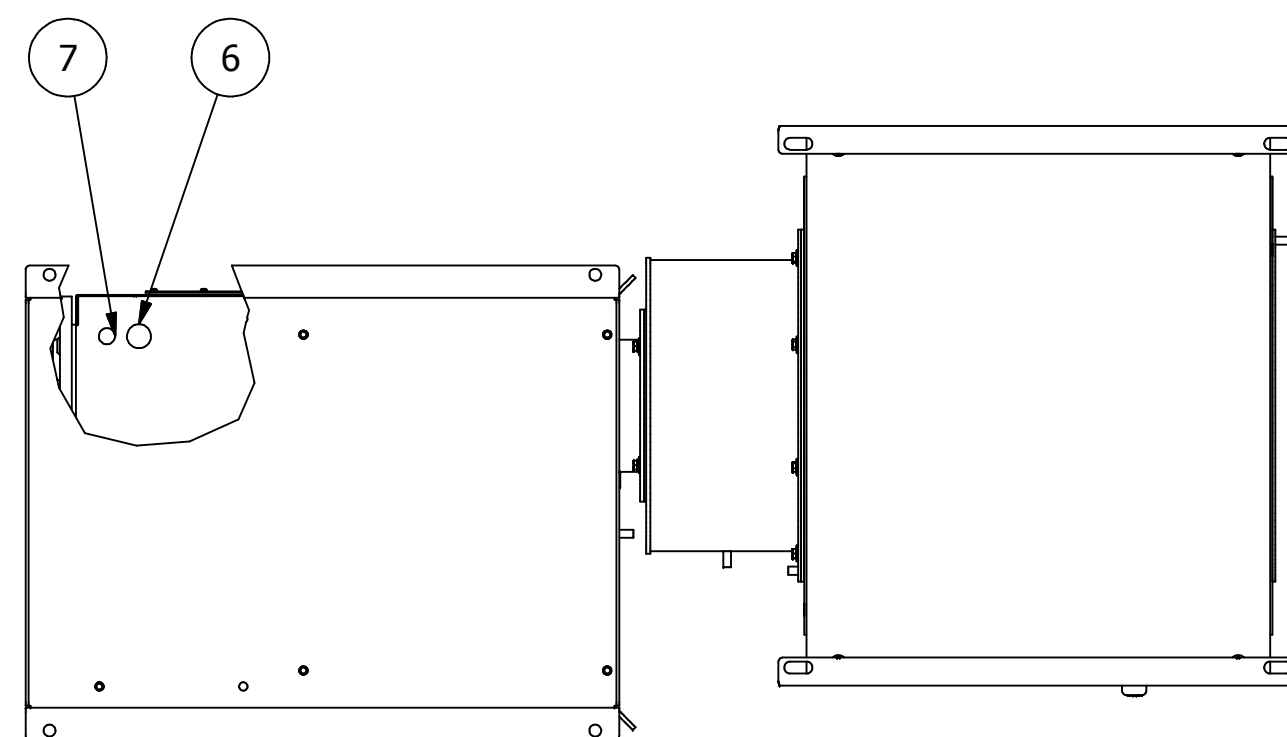
REAR VIEW



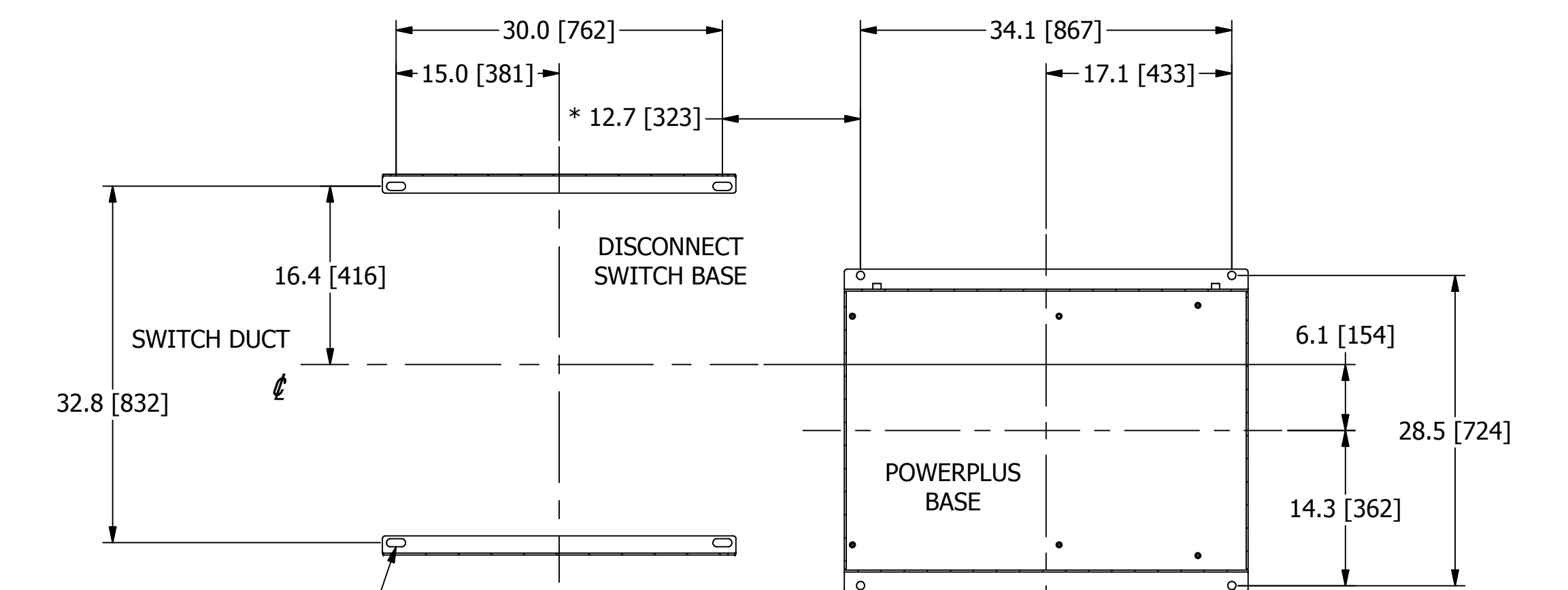
LEFT VIEW

- SHIPPING NOTES:**
1. POWERPLUS WILL BE SHIPPED SEPARATE FROM DISCONNECT GROUND SWITCH.
  2. DISCONNECT GROUND SWITCH MUST BE SHIPPED SEPARATELY AND INSTALLED IN THE FIELD.
  3. DISCONNECT GROUND SWITCH WILL BE SHIPPED WITH GASKET AND MOUNTING HARDWARE.
  3. POWERPLUS SHIPPING WEIGHT: 900lbs [409kg]
  5. DISCONNECT GROUND SWITCH SHIPPING WEIGHT: 350lbs [159kg]
  4. DIELECTRIC FLUID VOLUME: 41gal [154L]
  5. FINISH: ENAMEL, ASA 61, APPROX. RAL 7042.
  6. INDICATES CENTER OF GRAVITY OF POWERPLUS.

- INSTALLATION NOTES:**
1. POWERPLUS MUST BE MOUNTED ON LEVEL SURFACE OR SHIMMED TO WITHIN 1/8" [3.2] RISE PER 12" [305] RUN.
  2. COLD ROOF MAY NEED TO BE REINFORCED TO ACCEPT THE WEIGHT OF THE POWERPLUS UNIT.
  3. MAXIMUM ALLOWABLE DUCT INTERNAL TEMPERATURE: 122°F (50°C). MAXIMUM ALLOWABLE DUCT INTERNAL PRESSURE: 1 PSI (2.04" Hg). THE INSTALLER MUST USE AN ENTRANCE BUSHING IN ROOF TO MEET THESE SPECIFICATIONS.
  4. POWERPLUS MUST BE GROUNDED TO THE COLD ROOF BY THE END USER. REFER TO DWG B126972 FOR GROUNDING DETAILS.
  5. ALLOW 120" MINIMUM CLEARANCE ABOVE THE FLOOR TO LIFT AND REMOVE THE T/R RIG ASSEMBLY FROM THE OIL TANK. CLEARANCE DOES NOT INCLUDE RIGGING HEIGHT.
  6. POWERPLUS AND SWITCH ARE SEALED, RATED NEMA 4/IP56.



BOTTOM VIEW



MOUNTING ARRANGEMENT FROM TOP VIEW  
(SECTION B-B)

\* FOR REFERENCE ONLY. POWERPLUS AND SWITCH ASSEMBLY MUST BE FIELD FITTED TO THE H.V. DUCT WORK PRIOR TO SECURING TO ROOF.

**BALLOONED NUMBERS:**

- 1 POWERPLUS UNIT.
- 2 DISCONNECT GROUND SWITCH (SHIPPED SEPARATELY).
- 3 RATINGS NAMEPLATE, ALUMINUM PHOTO ETCHED.
- 4 ACCESS DOOR TO SWITCHGEAR AND CONTROL SECTION. ALLOW 27" [686] OF CLEARANCE FROM THIS FACE FOR DOOR SWING.
- 5 INPUT CIRCUIT BREAKER SWITCH HANDLE W/ INTERLOCK PROVISION INSIDE. SEE DWG C140616.
- 6 1" [25.4] DIA. CONDUIT HOLE FOR 120V CONTROL WIRING.
- 7 1/2" [12.7] DIA. CONDUIT HOLE FOR LOW VOLTAGE TRANSDUCER AND COMMUNICATION LINK CONDUIT.
- 8 GLAND PLATE FOR 3 PHASE POWER AND GROUND.
- 9 COOLING FAN FOR IGBT HEATSINK ASSEMBLY (USED ON 8.5 - 21kW UNITS ONLY).
- 10 WEATHER TIGHT, RJ45 CONNECTOR FOR NWL HMI CONNECTION.
- 11 LIFTING HOOKS (4 PLACES).
- 12 H.V. SWITCH MECHANISM W/ VIEWING WINDOW AND INTERLOCK PROVISIONS. SEE DWG C140616.
- 13 SIDE EXIT 18" DUCT MOUNTING PROVISION. INCLUDES GASKETS AND 3/8-16 HARDWARE, (8) PLACES ON A 20" [508] DIA. WITH 18" [457] DIA. DUCT OPENING.
- 14 1/2" NPT OUTPUT CONNECTION. OPTIONAL METRIC ADAPTER FOR H.V. BUSHING CONNECTION. CONVERTS 1/2" NPT TO M20-1.5. SEE DWG A117570.
- 15 EQUIPMENT SAFETY GROUND TERMINATION, 3/8-16 GROUND BOSS.
- 17 HIGH VOLTAGE OIL TANK w/OIL LEVEL SIGHT GLASS AND PRESSURE RELIEF VALVE.
- 18 OIL LEVEL SIGHT GLASS
- 19 PRESSURE RELIEF VALVE
- 20 REMOVABLE ACCESS PANEL FOR BUSHING CONNECTION AND MAINTENANCE.

ALL DIMENSIONS IN INCHES [mm]

<b>NWL</b> 312 RISING SUN RD BORDENTOWN, NJ 08505 TEL. (609) 298-7300 FAX. (609) 298-1982		
TITLE:	HF ESP, POWERPLUS SERIES 7, 4.2-8.5kW UNITS, w/ DISCONNECT SWITCH	
SCALE:	APP'D BY:	REVISION DATE:
N/A	RJK	01/29/18
DWG BY:	D.E.:	DWG:
KAF	RJK	4.5-8.5DS_S7
TOLERANCES: (UNLESS OTHERWISE SPECIFIED) ANGLES ±.5 DEG DECIMALS .XX ±.005 FRACTIONS ±.3/16		NWL PROPRIETARY INFORMATION, NOT TO BE REPRODUCED WITHOUT WRITTEN CONSENT