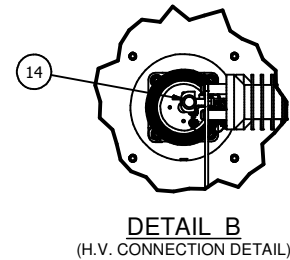
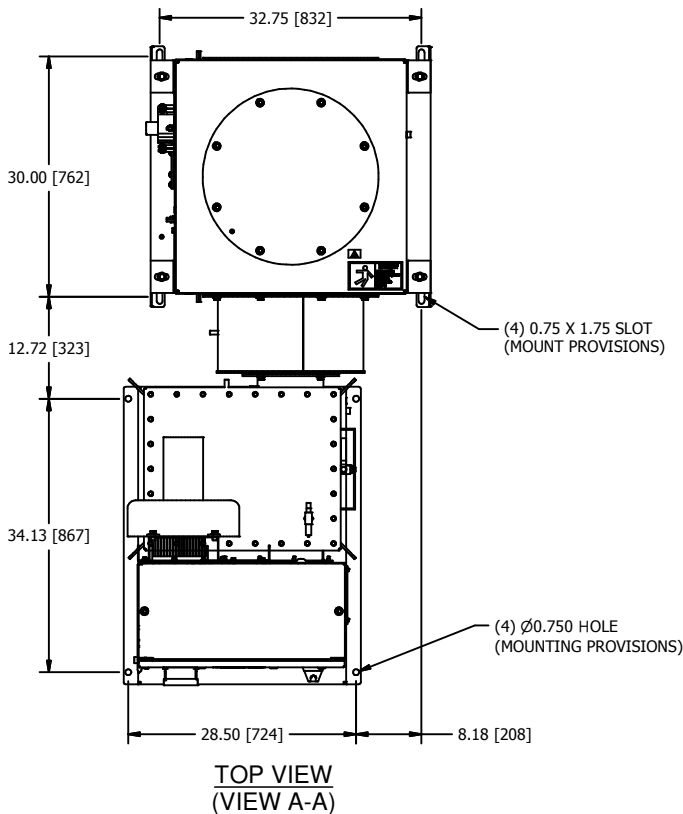
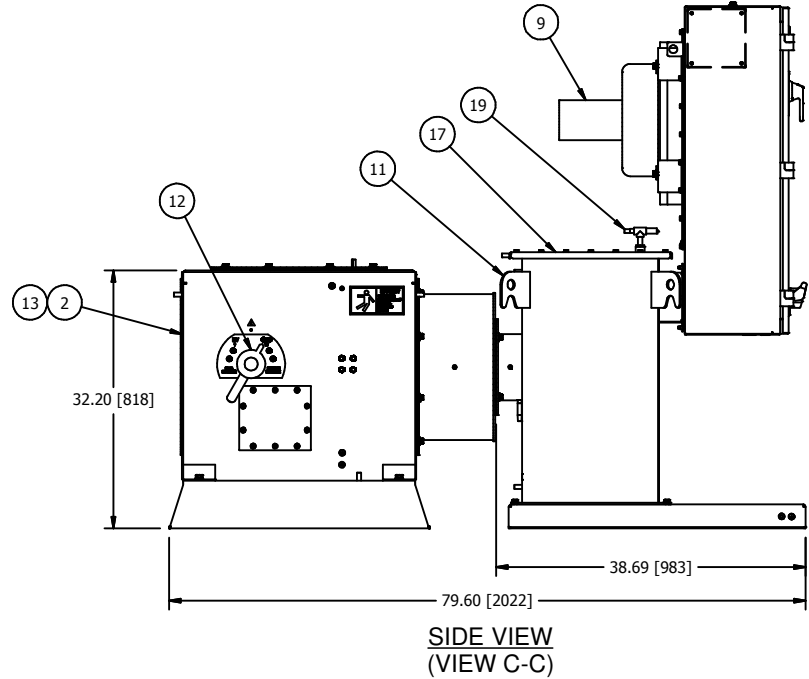
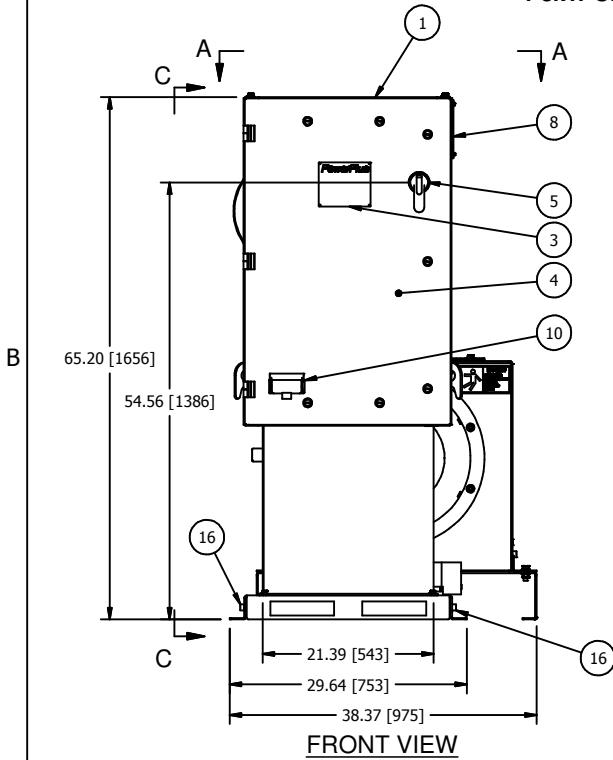


2

1

**HF ESP, POWERPLUS SERIES**  
**4-8kW UNITS w/DISCONNECT GROUND SWITCH**  
 (SHORT ENCLOSURE)



## NOTES:

- POWERPLUS MUST BE MOUNTED ON LEVEL SURFACE OR SHIMMED TO WITHIN 1/8" [3.2] RISE PER 12" [305] RUN.
- COLD ROOF MAY NEED TO BE REINFORCED TO ACCEPT THE WEIGHT OF THE POWERPLUS UNIT.
- MAXIMUM ALLOWABLE DUCT INTERNAL TEMPERATURE: 122°F (50°C). MAXIMUM ALLOWABLE DUCT INTERNAL PRESSURE: 1 PSI (2.04" Hg). THE INSTALLER MUST USE AN ENTRANCE BUSHING IN ROOF TO MEET THESE SPECIFICATIONS.
- POWERPLUS MUST BE GROUNDED TO THE COLD ROOF BY THE END USER. REFER TO DWG B125481 FOR GROUNDING DETAILS.

APPROX. WEIGHT WITH DISCONNECT GROUND SWITCH: 1250lbs (567kg).  
 DIELECTRIC FLUID VOLUME: 41gal (154L).  
 FINISH: ENAMEL, ASA 61, APPROX. RAL 7042.  
 TANK AND CONTROL ENCLOSURE RATED NEMA 4/IP56.

- POWERPLUS UNIT
- DISCONNECT GROUND SWITCH (SHIPPED SEPARATELY).
- RATINGS NAMEPLATE, ALUMINUM PHOTO ETCHED.
- SWITCHGEAR AND CONTROL SECTION WITH HINGED DOOR. ALLOW 27" [686] OF CLEARANCE FROM THIS FACE FOR DOOR SWING.
- INPUT CIRCUIT BREAKER SWITCH HANDLE WITH INTERLOCK PROVISION INSIDE. FOR ACCEPTABLE INTERLOCKS SEE DWG A105811.
- 1" [25.4] DIA. CONDUIT HOLE FOR 120V CONTROL WIRING.
- 1/2" [12.7] DIA. CONDUIT HOLE FOR LOW VOLTAGE COMMUNICATION AND OPTIONAL TRANSDUCER CONDUIT.
- GLAND PLATE FOR 3 PHASE POWER AND GROUND.
- COOLING FAN FOR IGBT HEATSINK ASSEMBLY (USED ON 8 - 21kW UNITS ONLY).
- EZ SCOPE PORT WITH RJ45 SOCKET FOR KEYPAD DISPLAY CONNECTION AND BNC CONNECTORS FOR MAKING EXTERNAL kV AND mA MEASUREMENTS.
- LIFTING HOOKS (4 PLACES).
- H.V. SWITCH MECHANISM WITH VIEWING WINDOW AND INTERLOCK PROVISIONS. FOR INTERLOCK AND BOLT EXTENSION INFORMATION SEE DWG A105811.
- SIDE EXIT 18" [457] DUCT MOUNTING PROVISION. INCLUDES GASKETS AND 3/8-16 HARDWARE (8) PLACES ON A 20" [508] DIA. B.C. WITH 18" [457] DIA. DUCT OPENING.
- 1/2" NPT OUTPUT CONNECTION TAB TO ESP.
- OPTIONAL METRIC ADAPTER FOR H.V. BUSHING CONNECTION. CONVERTS 1/2" NPT TO M20-1.5. SEE DWG A117570.
- EQUIPMENT SAFETY GROUND TERMINATION, 3/8-16 GROUND BOSS.
- HIGH VOLTAGE OIL TANK.
- OIL LEVEL SIGHT GLASS (NOT SHOWN).
- PRESSURE RELIEF VALVE.

DATA SHEET: ESP4-8DS-S  
 REVISION DATE: -  
 APPROVED BY: RJK

ALL DIMENSIONS IN INCHES [mm]