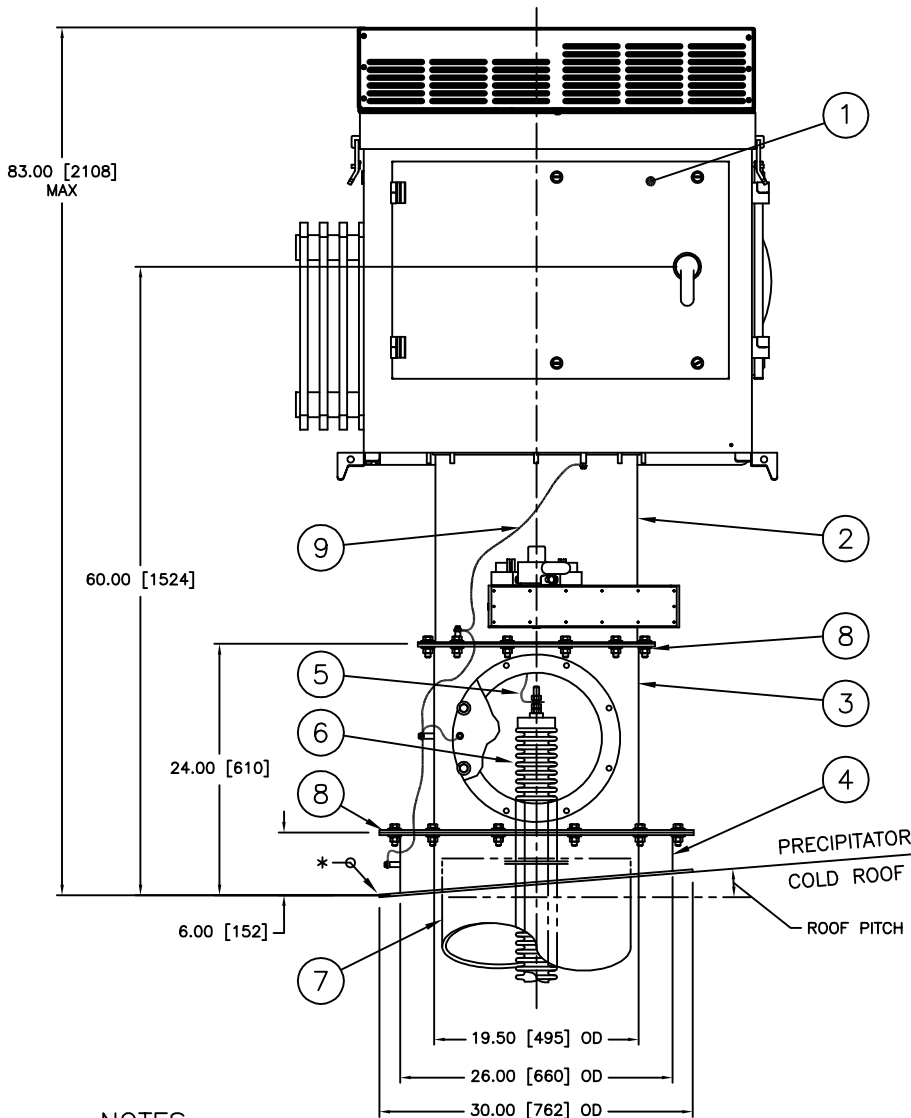




HF ESP, POWERPLUS SERIES ROOF ADAPTER ASSEMBLY

(FOR ROOF WITH EXISTING FEEDTHRU BUSHING AND PATCH PLATE)



- ① POWERPLUS UNIT.
- ② HV DUCT AND BUSHING ENCLOSURE WITH GROUND SWITCH.
- ③ POWERPLUS ADAPTER SPOOL WITH 12.5" [318] ID ACCESS PORT FOR HV CONNECTION AND 1/2" [13] NPTF VENT FITTING.
- ④ COLD ROOF/SPOOL ADAPTER. FIELD WELD SEAM* TO ROOF FOR WATER-TIGHT SEAL. THE 30.00" OD ADAPTER IS DESIGNED TO ACCOMODATE PITCHED ROOFS (SEE NOTES FOR DETAILS).
- ⑤ H.V. CABLE CONNECTION, (END USER SUPPLIED).
- ⑥ EXISTING H.V. FEEDTHRU BUSHING, (END USER SUPPLIED).
- ⑦ END USERS EXISTING ROOF PATCH PLATE/HV DUCT FLANGE (IF APPLICABLE).
- ⑧ 3/8-16 SS HARDWARE AND GASKETS SUPPLIED BY NWL.
- ⑨ SS GROUND CABLE TO GROUND EACH SECTION, INCLUDING ACCESS COVERS.

NOTES:

1. ROOF ADAPTERS ④ ARE AVAILABLE TO ACCOMMODATE COLD ROOFS FROM ZERO PITCH TO 3/4" [19] RISE PER 12.0" [305] RUN INCLINES, IN 1/4" [6] INCREMENTS. POSITION AND WELD* IN PLACE TO KEEP POWERPLUS UNIT LEVEL.
2. EXISTING ROOF PATCH PLATE OR DUCT FLANGE ⑦ MAY NEED TO BE TRIMMED TO ACCOMMODATE THE NEW COLD ROOF/SPOOL ADAPTER. IF THE OLD DUCT FLANGE MUST BE REMOVED ENTIRELY, LEAVING NO PROVISION FOR MOUNTING THE FEEDTHRU BUSHING, USE ROOF ADAPTER ASSEMBLY ESPASSY2.
3. POWERPLUS ADAPTER ③ MAY BE ROTATED AT 30 DEGREE INCREMENTS TO POSITION THE ACCESS PORT TOWARD AN OPEN AREA TO FACILITATE SERVICING.
4. WARNING: POWERPLUS UNIT WITH DUCT WORK WEIGHS A MAXIMUM OF 1200 lbs. [544 KG] COLD ROOF MAY NEED TO BE REINFORCED TO ACCEPT THE WEIGHT OF THE POWER PLUS UNIT.
5. MAXIMUM ALLOWABLE DUCT INTERNAL TEMPERATURE: 122°F (50°C).
MAXIMUM ALLOWABLE DUCT INTERNAL PRESSURE: 1 PSI (2.04"Hg).

DATA SHEET: ESPASSY1-D
REVISION DATE: 06/05/09
APPROVED BY: HH