



Transforming The Future Of Power Technology

312 Rising Sun Rd.
Bordentown, NJ 08505

phone: 609.298.7300
fax: 609.298.1982

precipproducts@nwl.com
www.nwl.com

CONSULT FACTORY WITH DETAIL REQUIREMENTS OR REQUEST TECHNICAL DIALOGUE

NWL's PowerCube™ Modules for T/R Control Cabinets

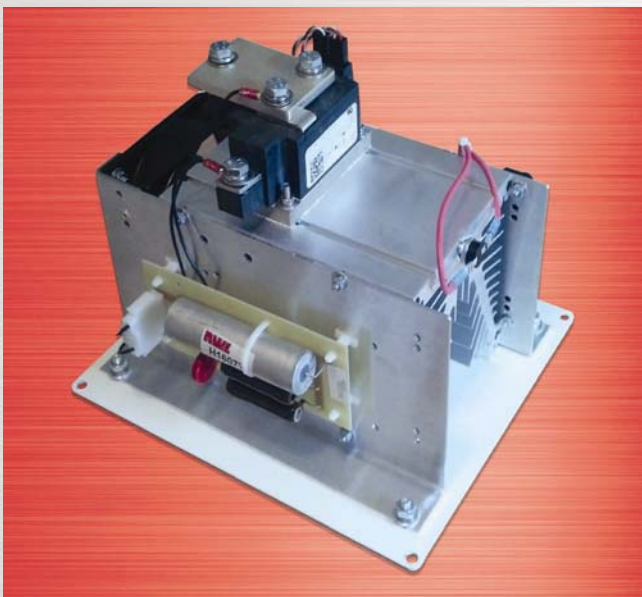
As electrostatic precipitators age, operators face a real challenge maintaining these systems and sourcing replacement parts. Many original components are either obsolete or difficult to find.

Among these hard-to-replace items are the power modules located in the T/R voltage control cabinets. The original SCRs (Silicon Controlled Rectifiers) were designed to provide power to the T/R set. The SCRs were a "hockey puck" design and were literally sandwiched between two heat sinks.

Replacing the SCRs has proved to be a very difficult maintenance challenge. Orientation of the thyristors between the plates is critical, and applying the correct torque pressure to affix the thyristor to the plates must be very precise.

NWL has developed a reliable power module, called the PowerCube™, which in most cases is a "plug and play" replacement for the original pair of SCRs. Available in currents from 120 to 450 amps, the PowerCube makes replacing worn-out SCRs a very simple and cost effective process.

PowerCube Features



- Replaces SCR with solid state thyristor - more reliable and precise control
- Complete power module - no assembly required
- Easily installed in minutes
- Plug and play replacement
- Options include fuses and trigger board



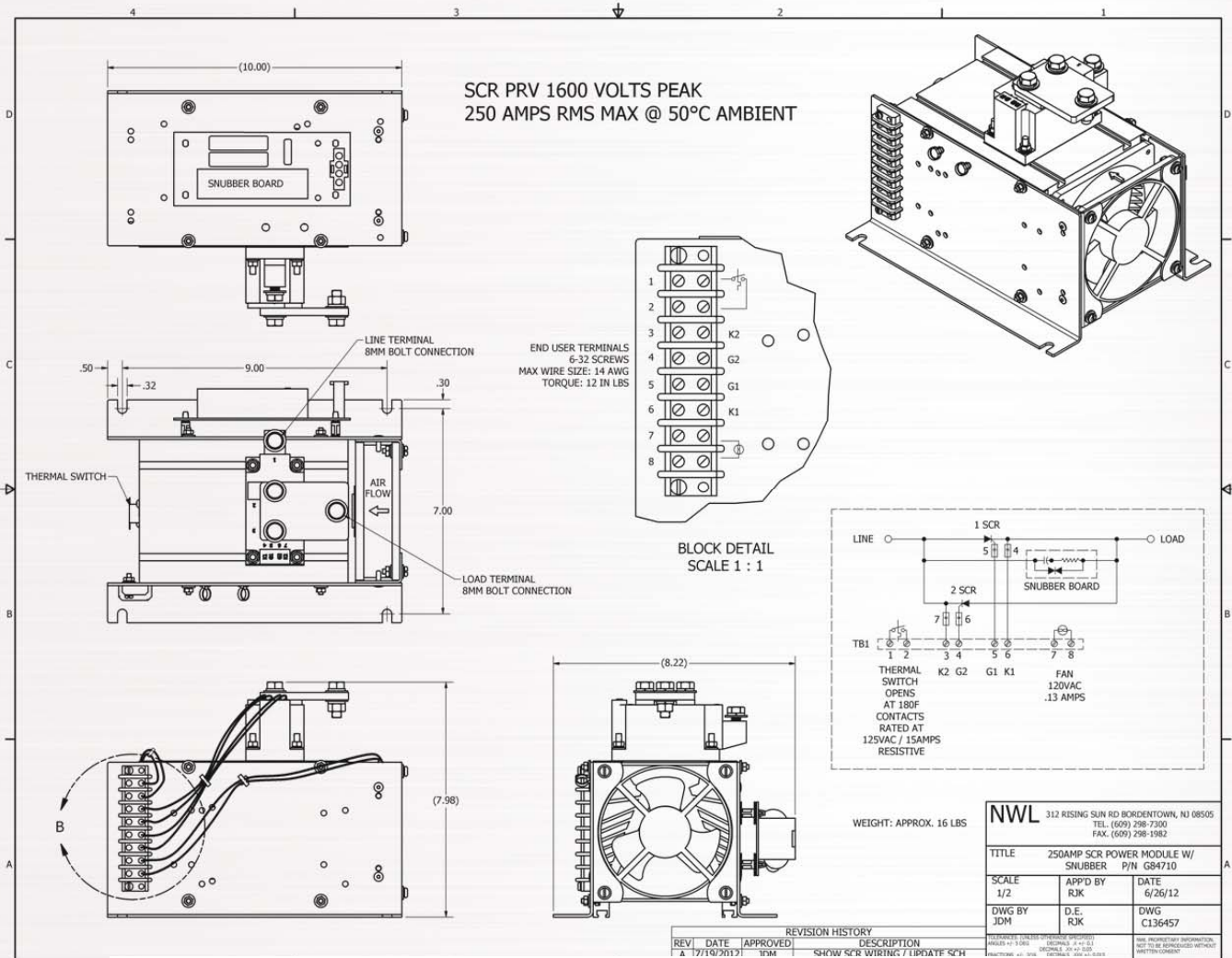
Transforming The Future Of Power Technology

312 Rising Sun Rd.
Bordentown, NJ 08505

phone: 609.298.7300
fax: 609.298.1982

precipproducts@nwl.com
www.nwl.com

CONSULT FACTORY WITH DETAIL REQUIREMENTS OR REQUEST TECHNICAL DIALOGUE



The standard PowerCube includes heat sink, fan, snubber and terminal block. Part number G84710 is shown in the above drawing. Available models and configurations are show below:

PowerCube Part Numbers

Description	120 amp	250 amp	450 amp
Standard version	G84705	G84710	G84715
Standard with fuse	G84706	G84711	G84716
Standard with fuse and trigger board	G84707	G84712	G84717